

Metastability and solubility limits in quaternary SnTe-based alloys guided by combinatorial sputtering

Sebastian Siol^{1†}, Aaron Holder^{1,2}, Brenden R. Ortiz³, Philip A. Parilla¹, Eric Toberer³, Stephan Lany¹, Andriy Zakutayev^{1*}*

¹National Renewable Energy Laboratory, Golden, CO 80401

²Chemical and Biological Engineering, University of Colorado, Boulder, CO 80309-0596

³Colorado School of Mines, Golden, CO 80401

[†]Current address: Empa, Swiss Federal Laboratories for Materials Science and Technology, CH-8600 Dübendorf, Switzerland

Keywords: SnTe, MnSe, MnTe, SnSe, non equilibrium, solubility, combinatorial sputtering, high throughput, computational phase diagram, quaternary alloys

Abstract

The ternary SnTe-MnTe and SnTe-SnSe heterostructural alloys have been demonstrated as promising materials for thermoelectric applications. In this work, the quaternary $\text{Sn}_{1-y}\text{Mn}_y\text{Se}_{1-x}\text{Te}_x$ phase space serves as a relevant model system to explore how a combination of computational and combinatorial-growth methods can be used to study equilibrium and non-equilibrium solubility limits. The controlled decomposition of metastable alloys is an attractive route to form nanostructured thermoelectric materials with reduced thermal conductivity. Results from first principle calculations indicate low equilibrium solubility of $x,y < 0.05$ that are in good agreement with results obtained from bulk equilibrium synthesis experiments and predict significantly higher spinodal limits. An experimental, combinatorial screening using sputtered thin films showed a remarkable increase in non-equilibrium solubility to over $x,y > 0.2$. These results were used to guide the bulk synthesis of metastable alloys. The ability to reproduce the non-equilibrium solubility levels in bulk materials indicates that combinatorial growth can inform bulk synthetic routes. Further, the large difference between equilibrium and non-equilibrium solubility limits in $\text{Sn}_{1-y}\text{Mn}_y\text{Se}_{1-x}\text{Te}_x$ indicates these metastable alloys are attractive for nano-precipitate formation.

1. Introduction

Thermoelectric (TE) power generation allows the transformation of waste heat into electrical energy and is expected to play an important role in the future of sustainable energy generation¹. While optimization of TE performance requires the control of transport properties of the material, many of the recent advances achieved by reducing the thermal conductivity². The lattice thermal conductivity can be reduced through phonon scattering by introducing secondary phase nanoprecipitates, point defects, grain boundaries and intrinsic bond anharmonicity³⁻⁵.

Secondary phase nanoprecipitates to scatter phonons or control the Fermi level^{6,7} can be incorporated through mechanical and chemical approaches. Mechanical approaches involve the incorporation of non-reactive secondary phases into a matrix phase. Chemical approaches are centered around a supersaturation and precipitation of a secondary phase within a solid matrix. For example, temperature can be used to increase the solubility of an alloy; subsequent quenching yields the formation of nanoparticles due to the decreased solubility on cooling^{7,8}. Liquid-state quenching provides even greater solubility and can yield very high volume fractions of nanoprecipitates⁹. However, in many systems, the change in solubility in the solid state is small and liquid phase quenching is impractical. Nanoprecipitate formation requires alternative to temperature to achieve metastable compositions. One solution has been to combine mechanical processing (milling to yield metastable powders) with subsequent chemical partitioning. In the following, we introduce SnTe-based alloys as a model system for testing new strategies to rationally design metastable precursors.

SnTe is a narrow band gap IV-VI semiconductor with demonstrated high ZT ¹⁰⁻¹³. Promising results have been reported regarding the isoelectric alloying of SnTe, specifically for (Sn,Mn)Te

and Sn(Te,Se). High solubility limits have been observed in these previous studies (MnTe in SnTe < 13%^{14,15}, SnSe in SnTe < 15%⁵) systems. Especially for SnTe alloyed with MnTe the maximum performance occurred at alloying concentrations slightly above the solubility limit and is attributed to an increase in phonon scattering from point defects and secondary phases as well as changes in the electronic band structure (i.e. band degeneracy and opening of the band gap)^{14,15}.

Based on the promising results of ternary SnTe alloys, we investigate the quaternary (Sn,Mn)(Se,Te) alloy system (**Figure 1a**). This 3-dimensional phase space can be constrained by limiting the anion to cation ratio to unity (see **Figure 1b**). While the isoelectric alloying with SnSe and MnTe has been successfully demonstrated¹⁵ the choice of MnSe is motivated by its structural and thermodynamic properties. Like SnTe, MnSe crystallizes in the cubic NaCl structure although the atomic volume is roughly 35% smaller than metallic SnTe (see **Table 1**). The entropic stabilization of the quaternary alloy thus is at odds with the enthalpic forces to separate the composition; both strain and the high stability of MnSe (melting point $T_m = 1460^\circ\text{C}$ ¹⁶) are expected to yield a ground state that exhibits low MnSe solubility in SnTe.

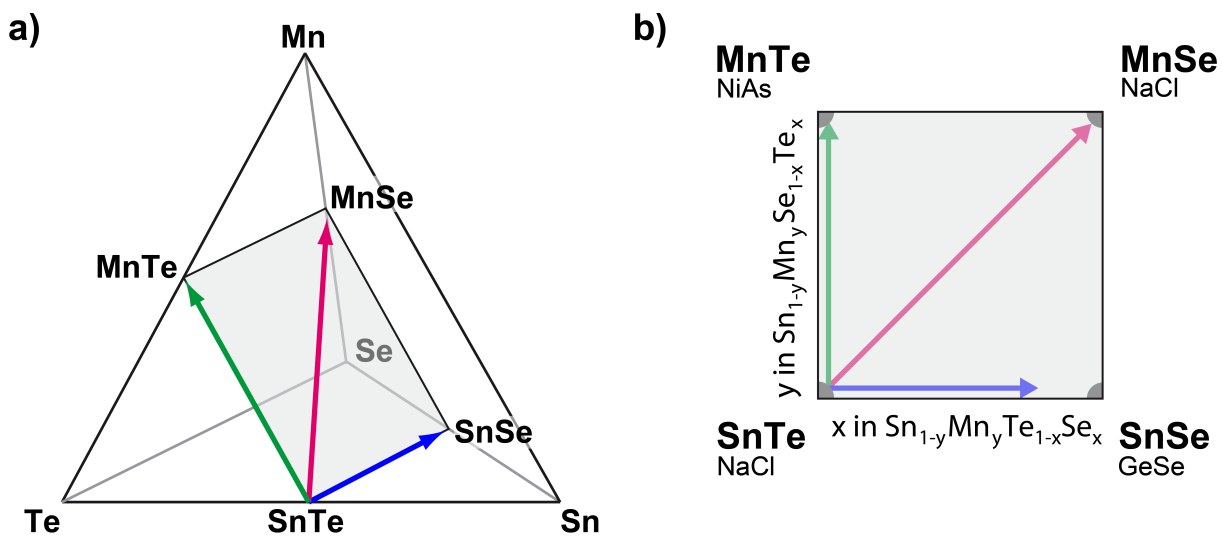


Figure 1: a) Schematic illustration of the quaternary (Mn,Sn)(Te,Se) phase space. The 3-dimensional phase space can be reduced to stoichiometric $\text{Sn}_{1-y}\text{Mn}_y\text{Se}_{1-x}\text{Te}_x$ compounds by choosing the precursors SnTe, SnSe, MnTe and MnSe, as indicate by the shaded area. b) Quaternary stoichiometric $\text{Sn}_{1-y}\text{Mn}_y\text{Se}_{1-x}\text{Te}_x$ phase space investigated in this work. Listed are the endmember compounds as well as schematic representations of their ground state crystal structures.

In this work, we present a general computational and experimental high-throughput approach to quickly identify promising material systems with large metastable phase regions. While high-throughput techniques are commonly used in other areas of materials science (i.e. novel materials for thin film PV¹⁷⁻²⁰ or Materials by Design^{21,22}) high throughput approaches are rather uncommon in TE research^{23,24}. Here, the equilibrium and metastable solubility limits of $\text{Sn}_{1-y}\text{Mn}_y\text{Se}_{1-x}\text{Te}_x$ were investigated for ultimate application in spontaneous nanostructure formation through a mixture of first principles calculations, non-equilibrium bulk syntheses, and

high-throughput thin film combinatorial sputtering. This structural analysis reveals a large region of metastable phase space that is accessible by non-equilibrium synthesis methods. This, in turn, should facilitate independent control of alloying concentration and the amount of nano-precipitates in the alloyed material, a strategy that has led to significant enhancement of thermoelectric properties for a variety of promising materials systems³.

2. Results

For an investigation of the composition-structure relationship in the quaternary $\text{Sn}_{1-y}\text{Mn}_y\text{Se}_{1-x}\text{Te}_x$ alloy system, a combined computational and experimental approach was employed. First principle calculations were used to determine solubility limits and end member compound properties. In parallel, bulk synthesis and high throughput combinatorial thin film deposition were performed to experimentally determine equilibrium and non-equilibrium single-phase boundaries.

2.1 Computational results

Prior to an investigation of the quaternary $\text{Sn}_{1-y}\text{Mn}_y\text{Se}_{1-x}\text{Te}_x$ alloy system, the properties of the binary end member compounds SnTe, MnTe, SnSe and MnSe were investigated. Table 1 shows a summary of functional properties calculated for different polymorphs for the respective materials. The properties provided for the end member binaries calculated for the NaCl structure can provide a general trend how the properties of SnTe would change upon alloying with those materials. For the case of alloying SnTe with SnSe, the orthorhombic (ORC) structure of SnSe can be viewed as a distorted NaCl structure, and is therefore commensurate with the SnTe lattice. Similar to $\text{SnS}^{25,26}$, SnSe has an inverted band gap in the ideal NaCl structure, but this structure is

not stable and a sizable conventional band gap opens due to the orthorhombic distortion (see Table 1).

Table 1: Computationally predicted properties and literature values for the binary end member compounds. Listed are the respective anti-ferromagnetic phases (AFM-Phase) with their corresponding DFT calculated polymorph energy relative to the ground state structure (ΔE_{gs}) and atomic volume (V), along with the electronic properties computed using GW; fundamental and direct band gaps (E_g and E_{g-D}), hole and electron effective masses (m_h and m_e), and the band gap from literature $E_{g-Exp.}$ for the reported thermodynamic ground state (marked with *). The computed data and supporting information for these materials is available at <http://materials.nrel.gov/>.

	AFM-Phase	ΔE_{gs} (meV/at.)	V (\AA^3 /at.)	E_g (eV)	E_{g-D} (eV)	m_h (m_0)	m_e (m_0)	$E_{g-Exp.}$ (eV)
SnTe	NaCl*	0	32.7	0.10	0.10	0.72	1.34	0.2 ⁵
MnTe	NiAs*	0	25.5	0.98	2.11	1.54	1.26	1.2 ²⁷
	NaCl	40	25.7	0.65	1.25	1.16	0.61	-
SnSe	ORC*	0	28.0	0.96	1.10	1.59	0.98	0.9 ²⁸
MnSe	NaCl*	0	20.5	2.52	3.01	1.57	0.78	2.6 ²⁹

One issue that is limiting the performance of SnTe for thermoelectric applications is its low band gap and high carrier concentration⁵. Considering a linear extrapolation of the materials properties from the end member compounds in NaCl structure (see Table 1) alloying with MnSe could increase the SnTe band gap while increasing the hole effective mass. To determine the thermodynamic solubilities for $\text{Sn}_{1-y}\text{Mn}_y\text{Se}_{1-x}\text{Te}_x$ with $x=y$ as well as $\text{Sn}_{1-x}\text{Mn}_x\text{Te}$ and $\text{SnTe}_{1-x}\text{Se}_x$ first principle calculations were performed for the mixing enthalpies. **Figure 2** shows the binodal and spinodal lines for all three cases, defining the metastable and unstable phase regions, respectively. No significant Mn-Se interaction was found for the quaternary alloy system hence

the system can be treated as a random alloy. A significant decrease in solubility is observed upon alloying with MnSe as compared to SnSe or MnTe. This might initially be counterintuitive since an increase in solubility is expected for the isostructural alloy. It can be explained however, by the large difference in atomic volume (35%, see Table 1) that leads to tensile stress in the alloy.

In addition, the co-doping of SnTe with Mn and Se introduces rock salt MnSe as a potential competing phase that is not present in the ternary $\text{Sn}_{1-x}\text{Mn}_x\text{Te}$ or $\text{SnTe}_{1-x}\text{Se}_x$ alloys. The increased relative stability of MnSe compared to the other competing phases, SnSe and MnTe, reduces the solubility limit of the quaternary solid solution despite the increase in configurational entropy compared to the ternary alloys.

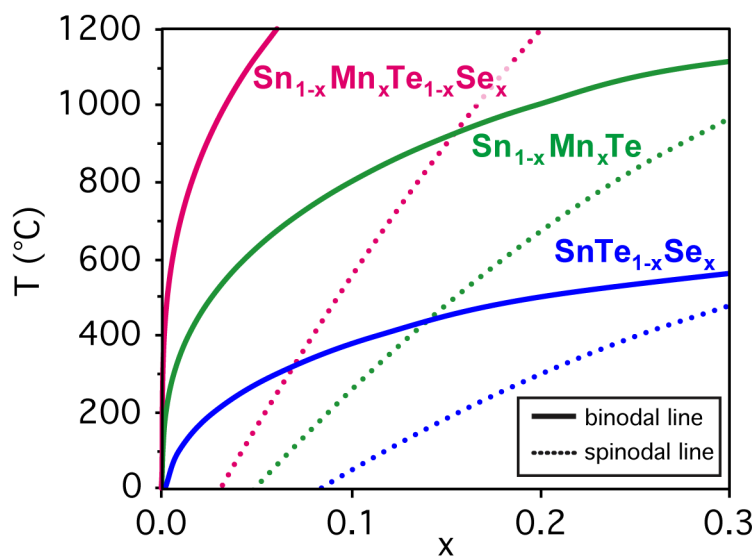


Figure 2: Computationally determined phase diagrams for alloys of $\text{Sn}_{1-y}\text{Mn}_y\text{Se}_{1-x}\text{Te}_x$ with $x=y$ as well as $\text{Sn}_{1-x}\text{Mn}_x\text{Te}$ and $\text{SnTe}_{1-x}\text{Se}_x$. Shown are the binodal and spinodal lines as a function of temperature and composition x .

2.2 Bulk synthesis

For comparison with first principle calculations, several bulk samples of the quaternary $\text{Sn}_{1-x}\text{Mn}_x\text{Se}_{1-x}\text{Te}_x$ alloy with $x=y$ were synthesized. Three routes of synthesis were employed to target different degrees of metastability, and five different compositions were investigated ($x=y = 0/0.05/0.10/0.15/0.20$) for each route.

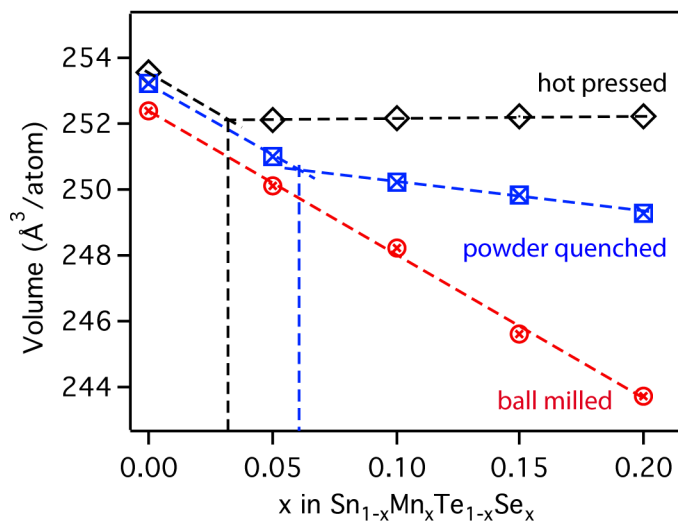


Figure 3: Volume/atom as a function of alloying concentration derived from XRD measurements for $\text{Sn}_{1-x}\text{Mn}_x\text{Se}_{1-x}\text{Te}_x$ alloys synthesized by different equilibrium and non-equilibrium methods. A change in slope indicates incorporation of secondary phases into the material.

Figure 3 shows the atomic volume derived from X-ray diffraction (XRD) measurements for the three bulk-processing methods employed herein. Hot pressed samples were processed at temperatures of roughly 600°C (80% of the melting point T_m for each alloy) and slowly cooled to

room temperature. The powder-quenched samples were processed at temperatures of over 700°C (90% T_m for each alloy) and quenched in water to avoid decomposition of the sample upon cooling. The ball-milled powder received no thermal treatment after ball milling and represents a state of non-equilibrium, due the high kinetic energies in the ball milling apparatus. Experimental details for the synthesis are given in the methods section. A linear shift is expected with increasing alloying concentration according to Vegard's law³⁰, whereas a change in slope indicates the formation of secondary phases. For the hot pressed sample this change in slope occurs at roughly $x=0.03$ alloying concentrations. The powder quench leads to increased solubility of over $x=0.06$. Ball milling of the powder on the other hand shows a remarkable increase in solubility of over $x=0.2$. Only minor impurities of metallic Sn and Te can be found in the XRD patterns (see Supporting Information, Figure S1).

2.3 Combinatorial screening

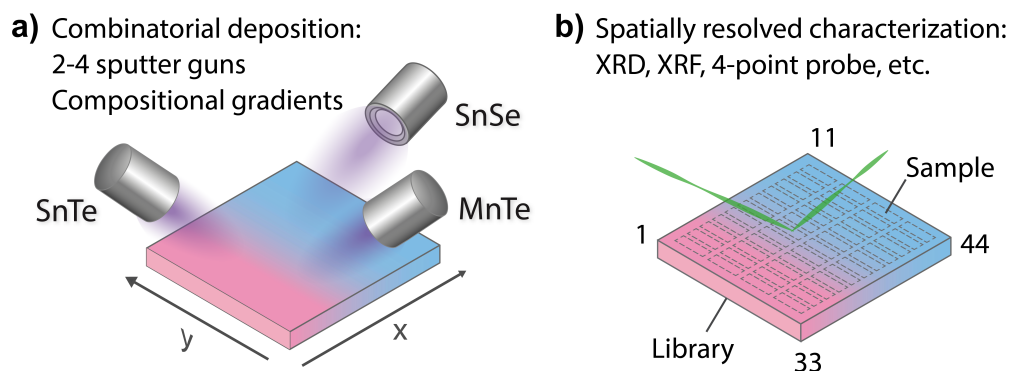


Figure 4: Schematic illustration of the combinatorial screening performed for this work. a) Several sputter guns are used to deposit compositional gradients onto a single substrate. Depending on the number of guns and the target materials different compositional spreads can be achieved. b) Spatially resolved high-throughput characterization (X-ray Diffraction (XRD), X-ray fluorescence (XRF) and 4-point probe mapping) is used to characterize individual samples on the so-called combinatorial libraries.

For an investigation of the non-equilibrium solubility in the quaternary alloy system, high-throughput combinatorial experiments were carried out. Combinatorial thin film deposition was performed using radio frequency (RF) magnetron co-sputtering from multiple targets leading to composition gradients along the substrate, and resulting in so-called combinatorial libraries (see **Figure 4**, details are given in the methods section). Spatially resolved Θ - 2Θ x-ray diffraction (XRD) measurements were performed on multiple libraries deposited at a substrate temperature

of 230°C. This way a large number of samples could be investigated (>1000 within the $\text{Sn}_{1-y}\text{Mn}_y\text{Se}_{1-x}\text{Te}_x$ compositional phase space).

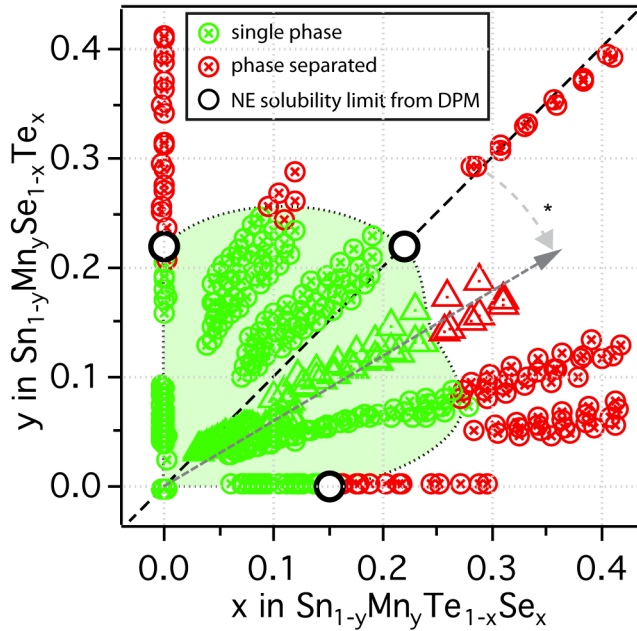


Figure 5: Experimentally determined phase map of the quaternary $\text{Sn}_{1-y}\text{Mn}_y\text{Te}_{1-x}\text{Se}_x$ alloy compositional space. Data points represent investigated compositions with deposition temperatures of 230°C. Green points refer to samples that show anion to cation ratios of 1 and show no signs of impurities from XRD measurements. Red points show structural impurities according to XRD. Open black circles represent non-equilibrium (NE) single phase boundaries extracted utilizing the disappearing phase method. *Arrow represents samples deposited from SnTe and MnSe targets. The Se-rich composition (Mn/Se-ratio < 1) indicates preferred anion-exchange in the alloy.

Figure 5 shows a phase map of the $\text{Sn}_{1-y}\text{Mn}_y\text{Se}_{1-x}\text{Te}_x$ with alloying concentrations of $x, y < 0.5$. The green data points represent samples that are single phase according to XRD. In addition to a simple screening for impurities the disappearing phase method was employed to determine the solubility limits (white points in Figure 4) for alloys of SnTe with MnTe, MnSe and SnSe (see **Figure S2**). Over the entire composition range high solubility limits of $x, y > 0.15$ are observed. Solubility limits for the SnTe/MnSe alloy are in good agreement with non-equilibrium solubility limits obtained from ball-milled powder (see Figure 3).

To investigate the feasibility of the alloy materials for thermoelectric applications a combinatorial screening of the resistivity ρ were carried out. The measurements were taken on combinatorial thin film libraries consisting of alloys of SnTe/MnTe, SnTe/MnSe, as well as SnTe/MnSe at 300K. Resistivities were found to be in a range of $10^{-3} \Omega\text{cm}$ to $10^{-4} \Omega\text{cm}$ (Figure S3a). Besides delamination that occurred for several samples due to mechanical stress in the film and lack of adhesion on the glass substrates only a minor rise in resistivity can be observed with increasing alloying concentration. In addition, the Seebeck coefficient was measured for individual samples at 300K. While for the SnTe/SnSe a decrease in Seebeck coefficient can be observed for higher alloying concentrations. Alloys of SnTe with MnTe and MnSe show promising results with the highest Seebeck coefficients of $54 \mu\text{V/K}$ and $41 \mu\text{V/K}$ occurring around $y \approx 0.1$ and $y, x \approx 0.1$ for the $\text{Sn}_{1-y}\text{Mn}_y\text{Te}$ and $\text{Sn}_{1-y}\text{Mn}_y\text{Se}_{1-x}\text{Te}_x$ alloys, respectively (Figure S3b). This is in good agreement with literature values for SnTe/MnTe as well as SnTe/SnSe, supporting the feasibility of an initial thin film materials screening for thermoelectric applications.

3. Discussion

A comprehensive analysis of the structure composition relation of the $\text{Sn}_{1-y}\text{Mn}_y\text{Te}_{1-x}\text{Se}_x$ alloy phase space by theoretical and experimental methods was carried out. **Figure 6** shows a comparison of the single phase boundaries obtained by different methods.

Computational results indicate very low equilibrium solubility of $x,y < 0.05$ for quaternary alloys of SnTe/MnSe in thermodynamic equilibrium. This can be explained by the large difference in atomic volume leading to tensile strain in the material (see Table 1) and is in very good agreement with results from bulk synthesis and values from literature for ternary (Sn,Mn)Te and Sn(Se,Te) alloys. Theoretical predictions for equilibrium solubility limits in these ternary alloys at 1000°C are only slightly higher than literature values for the ternary samples that were quenched from 1150°C^{15,14} (see Figure 6). In addition, the solubility limits obtained for the hot pressed SnTe/MnSe quaternary alloy from this work are also within 3% of the theoretical prediction, which is a remarkably good agreement. This favorable comparison highlights the feasibility of an accelerated computational screening of equilibrium solubility limits even in complex alloy systems like the quaternary alloys investigated in this work.

The solubility limits in the SnTe/MnSe can be increased somewhat by quenching the samples in water (powder-quenched). This synthesis route allows for more rapid cooling from a higher-temperature and therefore higher-energy state, than for the hot-pressed samples discussed above. Since the cooling process is fast only little time is available for the decomposition of the alloy in the end member products. For the powder-quenched SnTe/MnSe alloy non-equilibrium solubility limits in the range of 7% could be achieved.

The non-equilibrium solubility limits obtained from the ball milled alloy powder and from sputtered thin films are remarkably higher, exceeding compositional values of $x,y > 0.2$. The increase in solubility for these methods is due to the more energetic environments during the synthesis processes. The high-energy collisions during ball milling can supply more energy than the heating during hot-pressing or powder-quenching³¹. At the same time kinetic energies of the adatoms during RF sputtering are comparably high (typically in the eV range³²). It is not unusual for thin film alloys deposited at high kinetic energies to show extended single-phase boundaries^{33,21}. For both of these processes, even at higher alloying concentrations binodal decomposition can be kinetically hindered, as shown in **Figure 6**.

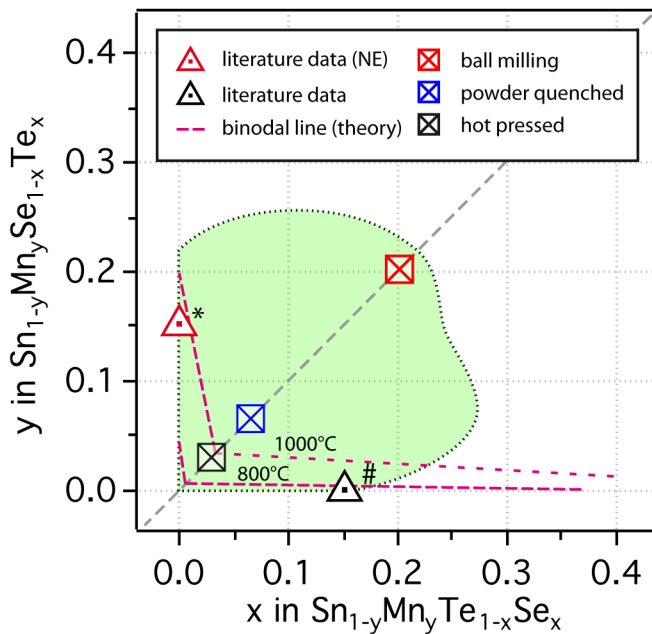


Figure 6: Combination of non-equilibrium solubility limits from sputter deposition (Figure 5) as well as non-equilibrium (NE) and equilibrium bulk synthesis. The dashed lines represent binodal lines from computational data for 800°C and 1000°C. * is taken from Ref.¹⁵ (1150°C + quenching in water), # is taken from Ref. 5 (anneal at 900°C).

An additional interesting result of this study is the evolution of the non-equilibrium solubility line as obtained from combinatorial experiments. Upon alloying of SnTe with MnSe the resulting $\text{Sn}_{1-y}\text{Mn}_y\text{Te}_{1-x}\text{Se}_x$ films exhibit compositions of $x > y$ indicating preferred anion exchange (See Figure 5). This can tentatively explained by a reduction of tensile stress in the material as described by Ortiz et al.³⁴ and implies a new design principle for isoelectric alloying for thermoelectric applications. By carefully choosing the cation and anion alloying elements it should be possible to suppress macroscopic volume changes of the alloy, while maintaining local strain that is necessary to enable enhances in phonon scattering. Using non-equilibrium bulk synthesis such as spark plasma sintering this promising phase space can be made accessible for thermoelectric applications. In particular, material systems with large accessible metastable composition space are promising for the controlled incorporation of nano-precipitates and secondary phases to increase phonon scattering. Most metastable alloys can withstand heating up to a certain temperature before they undergo binodal-decomposition, i.e. sufficient energy needs to be supplied to overcome kinetic barriers in the decomposition pathway. In turn, this means that the alloy can be designed to achieve the desired concentration of nano-precipitates at the targeted operating temperature of the thermoelectric by carefully adjusting the alloying concentration and therefore the degree of metastability.

4. Conclusion

The integration of unique micro/nanostructures into bulk thermoelectric materials is an attractive way of improving ZT. This work has demonstrated that a combination of combinatorial sputtering and computation can serve as an effective proxy for identifying solubility/metastability boundaries in complex chemical spaces. Furthermore, results from sputtering have been shown to be reproducible in bulk (*via* high-energy ball milling), allowing

the results to be generalized into a form-factor attractive to thermoelectric applications. We have specifically exhibited the technique on alloys of $\text{Sn}_{1-y}\text{Mn}_y\text{Te}_{1-x}\text{Se}_x$, demonstrating that a large region of metastability ($0.05 < x,y < 0.20$) is present, providing a wide array of potential chemical compositions that can be used to generate nuanced micro/nanostructures in bulk. Our approach serves as a case-study for the rapid generation of alloying data- combining computation, combinatorial sputtering, and bulk synthesis to enable controlled partitioning and evolution of micro/nanostructures in thermoelectric materials.

4. Methods

4.1 Computational work

The first principles calculations were performed with the VASP code and its implementations of DFT and GW^{35,36}, using the standard projector augmented wave pseudopotentials distributed with VASP. The GW calculations of the binary electronic properties reported in Table 1 were performed as described in Ref.³⁷. The alloy mixing enthalpies were calculated in DFT+U^{38,39} with $U = 3\text{eV}$ for Mn-d orbitals and an energy cutoff of 420 eV. To model the alloys, we used the special quasi-random structure (SQS) method⁴⁰ to generate ideally random alloy structures for each phase and composition. The use of random alloy models for describing the SnTe-rich quaternary alloys is supported by the predicted binding energy between Mn and Se of -0.036 meV , where the law of mass action indicates that for such a small attractive energy the pairs will be predominately dissociated at room temperature or higher. The mixing enthalpy ($\Delta H_m(x)$) calculations were performed using 64-atom SQS models. For the Mn containing alloys, we used the lowest energy magnetic configuration of the Mn cations, as determined from magnetic configuration sampling, for computing $\Delta H_m(x)$. The alloy $\Delta G_m(x)$ was determined from $\Delta H_m(x)$ and the configurational entropy of a random alloy: $\Delta S = -k_B[x\ln x + (1-x)\ln(1-x)]$. The reported solubility limit (binodal line) are approximated from the $dG(T)/dx = 0$ condition, and the spinodal line evaluated using the zero-curvature condition.

4.2 Bulk synthesis

For the bulk synthesis Mn (99.99%), Se (99.999%), Te (99.999%), Sn (99.99%) precursors in shot or chunk form were used. Samples ranging from 0.00-0.20 substitution (x in $\text{Sn}_{1-x}\text{Mn}_x\text{Te}_{1-x}\text{Se}_x$) in steps of 5% were prepared. Samples were loaded in stainless-steel vials with 3 0.5” stainless-steel balls and milled continuously for 3h. Powders were subsequently passed through a 106 μm sieve. XRD measurements were performed at this step (*ball-milled* in Figure 3). Ball-milled powders were then divided into two batches: one for hot-pressing and one for annealing. For hot-pressing, powders were loaded into a high-density graphite die and placed in an induction, uniaxial hot-press. Samples were heated under vacuum (<5mT) at 250°C/min to 600°C and hot pressed for 1h at 80 MPa. Afterwards, the samples were annealed at 80% T_m (600°C-691°C) for 30min. The samples were cooled to RT in approximately 30min, sectioned via diamond saw and subsequently analyzed with XRD (*hot-pressed* in Figure 3). For the annealing experiment (*powder-quenched* in Figure 3), the remaining ball-milled powder was sealed in fused-silica ampoules under rough vacuum. Ampoules were subsequently dropped in pre-heated furnaces (90% T_m , 675°C-794°C) and annealed for 72h. Afterwards the samples were quenched in water and analyzed with XRD. Atomic cell volumes were determined from XRD data using LeBail fits.

4.3 Combinatorial screening

Thin-film combinatorial libraries were deposited using orthogonal composition and temperature gradients via RF co-sputtering from ceramic SnTe and MnTe, SnSe or MnSe targets, respectively (see **Figure 1c**). By applying intentional and well-controlled gradients on the substrate during combinatorial thin film synthesis, several values of deposition parameters can be covered in a single synthesis experiment¹⁷. For selected experiments a uniform temperature was applied over the whole substrate area and co-sputtering from 3 targets was carried out (SnTe, MnTe and MnSe, or SnTe, SnSe and MnSe, respectively – see Figure 1.c). Several libraries were deposited to cover a broad range of deposition temperatures and produce thin-film samples over the entire alloy composition range. A total of 44 samples were defined on a single library. The samples were analyzed via spatially-resolved X-ray fluorescence (XRF) and XRD with respect to their composition and crystal structure (including disappearing phase analysis), and electrical properties were characterized using 4 point probe mapping. Single point Seebeck measurements

were carried out at 300K on selected samples. A more detailed description of the combinatorial experiments can be found in Supplementary Material and in our prior work^{19,41}.

Corresponding Author

Correspondence to siol.sebastian@gmail.com and andriy.zakutayev@nrel.gov

Author Contributions

The manuscript was written by SS and AZ with contributions from all authors. AH and SL performed the computational analysis, BO performed the bulk synthesis supervised by ET. SS conducted the high throughput experiments with contributions and supervision from AZ. PAP contributed to the evaluation data from high throughput experiments. All authors have given inputs to the text and the approval to the final version of the manuscript.

Acknowledgements

This work was supported by NREL's Laboratory Directed Research and Development (LDRD) program. In addition, SS and AH gratefully acknowledge funding from the US Department of Energy, Office of Science, Office of Basic Energy Sciences, as part of the Energy Frontier Research Center "Center for Next Generation of Materials by Design" under contract No. DE-AC36-08GO28308 to NREL. The authors declare no competing financial interests.

Literature

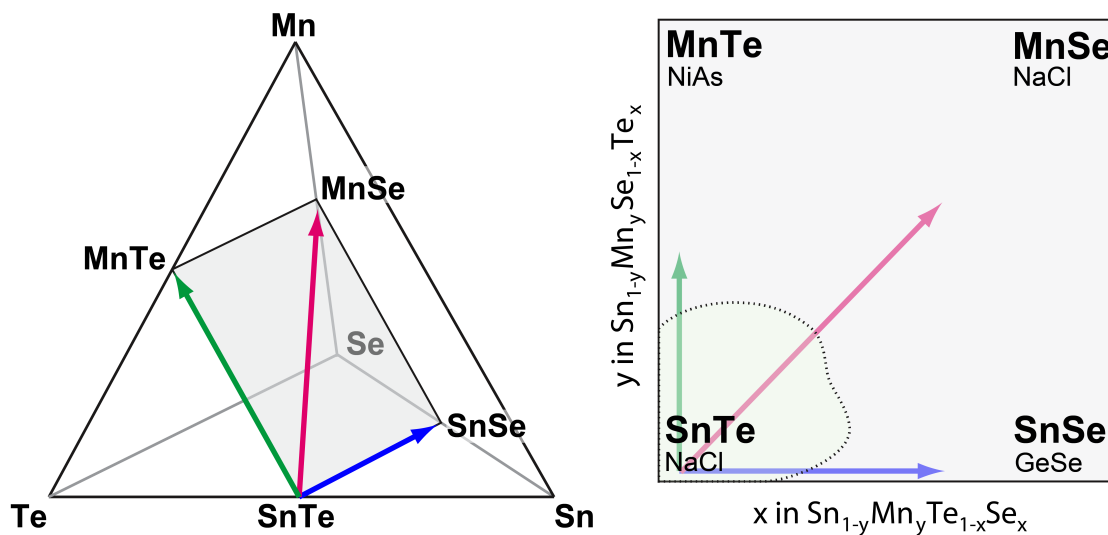
- 1 G. J. Snyder and E. S. Toberer, *Nat. Mater.*, 2008, **7**, 105–114.
- 2 M. G. Kanatzidis, *Chem. Mater.*, 2010, **22**, 648–659.
- 3 Y. Pei, J. Lensch-Falk, E. S. Toberer, D. L. Medlin and G. J. Snyder, *Adv. Funct. Mater.*,

- 2011, **21**, 241–249.
- 4 K. Biswas, J. He, I. D. Blum, C.-I. Wu, T. P. Hogan, D. N. Seidman, V. P. Dravid and M. G. Kanatzidis, *Nature*, 2012, **489**, 414–8.
 - 5 A. Banik and K. Biswas, *J. Mater. Chem. A*, 2014, **2**, 9620.
 - 6 Y. Pei, X. Shi, A. LaLonde, H. Wang, L. Chen and G. J. Snyder, *Nature*, 2011, **473**, 66–69.
 - 7 G. Tan, F. Shi, S. Hao, L.-D. Zhao, H. Chi, X. Zhang, C. Uher, C. Wolverton, V. P. Dravid and M. G. Kanatzidis, *Nat. Commun.*, 2016, **7**, 12167.
 - 8 A. Banik, B. Vishal, S. Perumal, R. Datta and K. Biswas, *Energy Environ. Sci.*, 2016, **9**, 2011–2019.
 - 9 Y. Pei, J. Lensch-Falk, E. S. Toberer, D. L. Medlin and G. J. Snyder, *Adv. Funct. Mater.*, 2011, **21**, 241–249.
 - 10 M. Zhou, Z. M. Gibbs, H. Wang, Y. Han, L. Li and G. Jeffrey Snyder, *Appl. Phys. Lett.*, 2016, **109**, 42102.
 - 11 G. Tan, W. G. Zeier, F. Shi, P. Wang, G. J. Snyder, V. P. Dravid and M. G. Kanatzidis, *Chem. Mater.*, 2015, **27**, 7801–7811.
 - 12 M. Zhou, Z. M. Gibbs, H. Wang, Y. Han, C. Xin, L. Li and G. J. Snyder, *Phys. Chem. Chem. Phys.*, 2014, **16**, 20741–20748.
 - 13 L. D. Zhao, X. Zhang, H. Wu, G. Tan, Y. Pei, Y. Xiao, C. Chang, D. Wu, H. Chi, L. Zheng, S. Gong, C. Uher, J. He and M. G. Kanatzidis, *J. Am. Chem. Soc.*, 2016, **138**, 2366–2373.
 - 14 H. Wu, C. Chang, D. Feng, Y. Xiao, X. Zhang, Y. Pei, L. Zheng, D. Wu, S. Gong, Y. Chen, J. He, M. G. Kanatzidis and L.-D. Zhao, *Energy Environ. Sci.*, 2015, **8**, 3298–3312.
 - 15 G. Tan, F. Shi, S. Hao, H. Chi, T. P. Bailey, L.-D. Zhao, C. Uher, C. Wolverton, V. P. Dravid and M. G. Kanatzidis, *J. Am. Chem. Soc.*, 2015, 150826160359004.
 - 16 D. L. Perry, *Handbook of Inorganic Compounds, Second Edition*, CRC Press, Boca Raton, FL, 2011.
 - 17 M. L. Green, I. Takeuchi and J. R. Hattrick-Simpers, *J. Appl. Phys.*, 2013, **113**, 231101.
 - 18 K. Mokurala, L. L. L. Baranowski, F. W. F. W. de Souza Lucas, S. Siol, M. F. A. M. M. F. A. M. van Hest, S. Mallick, P. Bhargava and A. Zakutayev, *ACS Comb. Sci.*, 2016, **18**, 583–589.
 - 19 S. Siol, P. Schulz, M. Young, K. A. K. A. Borup, G. Teeter and A. Zakutayev, *Adv. Mater. Interfaces*, 2016, **3**, 1600755.
 - 20 A. W. Welch, L. L. Baranowski, P. Zawadzki, C. DeHart, S. Johnston, S. Lany, C. A. Wolden and A. Zakutayev, *Prog. Photovoltaics Res. Appl.*, 2016.
 - 21 H. Peng, P. F. Ndione, D. S. Ginley, A. Zakutayev and S. Lany, *Phys. Rev. X*, 2015, **5**, 21016.

- 22 A. M. Holder, S. Siol, P. F. Ndione, H. Peng, A. M. Deml, B. E. Matthews, L. T. Schelhas, M. F. Toney, R. G. Gordon, W. Tumas, J. D. Perkins, D. S. Ginley, B. P. Gorman, J. Tate, A. Zakutayev and S. Lany, *Sci. Adv.*, 2017, in review.
- 23 M. Otani, K. Itaka, W. Wong-Ng, P. K. Schenck and H. Koinuma, *Appl. Surf. Sci.*, 2007, **254**, 765–767.
- 24 J. García-Cañadas, N. J. E. Adkins, S. McCain, B. Hauptstein, A. Brew, D. J. Jarvis and G. Min, *ACS Comb. Sci.*, 2016, **18**, 314–319.
- 25 R. L. Z. Hoyer, P. Schulz, L. T. Schelhas, A. M. Holder, K. H. Stone, J. D. Perkins, D. Vigil-Fowler, S. Siol, D. O. Scanlon, A. Zakutayev, A. Walsh, I. C. Smith, B. C. Melot, R. C. Kurchin, Y. Wang, J. Shi, F. C. Marques, J. J. Berry, W. Tumas, S. Lany, V. Stevanović, M. F. Toney and T. Buonassisi, *Chem. Mater.*, 2017, acs.chemmater.6b03852.
- 26 J. Vidal, S. Lany, J. Francis, R. Kokenyesi and J. Tate, *J. Appl. Phys.*, 2014, **115**, 113507.
- 27 W. Xie, S. Populoh, K. Gałazka, X. Xiao, L. Sagarna, Y. Liu, M. Trottmann, J. He and A. Weidenkaff, *J. Appl. Phys.*, 2014, **115**, 103707.
- 28 L.-D. Zhao, S.-H. Lo, Y. Zhang, H. Sun, G. Tan, C. Uher, C. Wolverton, V. P. Dravid and M. G. Kanatzidis, *Nature*, 2014, **508**, 373–7.
- 29 N. Moloto, M. J. Moloto, M. Kalenga, S. Govindrajulu and M. Airo, *Opt. Mater. (Amst.)*, 2013, **36**, 31–35.
- 30 K. T. Jacob, S. Raj and L. Rannesh, *Int. J. Mater. Res.*, 2007, **98**, 776–779.
- 31 T. Hashishin, Z. Tan, K. Yamamoto, N. Qiu, J. Kim, C. Numako, T. Naka, J. C. Valmalette and S. Ohara, *Sci. Rep.*, 2014, **4**, 4700.
- 32 D. Depla and S. Mahieu, *Reactive Sputter Deposition*, Springer-Verlag, Berlin, Heidelberg, 2008, vol. 109.
- 33 A. Bikowski, A. Holder, H. Peng, S. Siol, A. Norman, S. Lany and A. Zakutayev, *Chem. Mater.*, 2016, **28**, 7765–7772.
- 34 B. R. Ortiz, H. Peng, A. Lopez, P. A. Parilla, S. Lany and E. S. Toberer, *Phys. Chem. Chem. Phys.*, 2015, **17**, 19410–19423.
- 35 G. Kresse and D. Joubert, *Phys. Rev. B*, 1999, **59**, 1758–1775.
- 36 M. Shishkin and G. Kresse, *Phys. Rev. B*, 2006, **74**, 35101.
- 37 H. Peng and S. Lany, *Phys. Rev. B*, 2012, **85**, 201202.
- 38 J. P. Perdew, K. Burke and M. Ernzerhof, *Phys. Rev. Lett.*, 1996, **77**, 3865–3868.
- 39 S. L. Dudarev, G. A. Botton, S. Y. Savrasov, C. J. Humphreys and A. P. Sutton, *Phys. Rev. B*, 1998, **57**, 1505–1509.
- 40 A. Zunger, S.-H. Wei, L. G. Ferreira and J. E. Bernard, *Phys. Rev. Lett.*, 1990, **65**, 353–356.
- 41 S. Siol, T. P. Dhakal, G. S. Gudavalli, P. P. Rajbhandari, C. DeHart, L. L. L. Baranowski and A. Zakutayev, *ACS Appl. Mater. Interfaces*, 2016, **8**, 14004–14011.

TOC entry:

A combined theoretical and experimental approach was used to determine the equilibrium as well as non-equilibrium solubility lines in the quaternary $\text{Sn}_{1-y}\text{Mn}_y\text{Se}_{1-x}\text{Te}_x$ alloy space, revealing a large area of accessible metastable phase space.



TOC figure