



Turbulence dissipation rate estimated from lidar observations during the LAPSE-RATE field campaign

Miguel Sanchez Gomez¹, Julie K. Lundquist^{1,2}, Petra M. Klein^{3,4}, and Tyler M. Bell^{3,4}

¹Department of Atmospheric and Oceanic Sciences, University of Colorado Boulder, Boulder, CO 80303, United States

²National Renewable Energy Laboratory, Golden, CO 80401, United States

³University of Oklahoma School of Meteorology, Norman, OK 73072, United States

⁴University of Oklahoma Center for Autonomous Sensing and Sampling, Norman, OK 73072, United States

Correspondence: Miguel Sanchez Gomez (misa5952@colorado.edu)

Received: 30 December 2020 – Discussion started: 8 January 2021

Revised: 1 May 2021 – Accepted: 4 June 2021 – Published: 22 July 2021

Abstract. The International Society for Atmospheric Research using Remotely-piloted Aircraft (ISARRA) hosted a flight week in July 2018 to demonstrate unmanned aircraft systems' (UASs) capabilities in sampling the atmospheric boundary layer. This week-long experiment was called the Lower Atmospheric Profiling Studies at Elevation – a Remotely-piloted Aircraft Team Experiment (LAPSE-RATE) field campaign. Numerous remotely piloted aircraft and ground-based instruments were deployed with the objective of capturing meso- and microscale phenomena in the atmospheric boundary layer. The University of Oklahoma deployed one Halo Streamline lidar, and the University of Colorado Boulder deployed two WindCube lidars. In this paper, we use data collected from these Doppler lidars to estimate turbulence dissipation rate throughout the campaign. We observe large temporal variability of turbulence dissipation close to the surface with the WindCube lidars that is not detected by the Halo Streamline. However, the Halo lidar enables estimating dissipation rate within the whole boundary layer, where a diurnal variability emerges. We also find a higher correspondence in turbulence dissipation between the WindCube lidars, which are not co-located, compared to the Halo and WindCube lidar that are co-located, suggesting a significant influence of measurement volume on the retrieved values of dissipation rate. This dataset has been submitted to Zenodo (Sanchez Gomez and Lundquist, 2020) for free and is openly accessible (<https://doi.org/10.5281/zenodo.4399967>).

Copyright statement. This work was authored (in part) by the National Renewable Energy Laboratory, operated by Alliance for Sustainable Energy, LLC, for the U.S. Department of Energy (DOE) under contract no. DE-AC36-08GO28308. The views expressed in the article do not necessarily represent the views of the DOE or the U.S. Government. The United States Government retains and the publisher, by accepting the article for publication, acknowledges that the United States Government retains a non-exclusive, paid-up, irrevocable, worldwide license to publish or reproduce the published form of this work, or allow others to do so, for US Government purposes.

1 Introduction

The Lower Atmospheric Profiling Studies at Elevation – a Remotely-piloted Aircraft Team Experiment (LAPSE-RATE) field campaign took place in July 2018 in the San Luis Valley of Colorado in western North America (de Boer et al., 2020b). This project aimed to sample the lower atmospheric boundary layer using unmanned aircraft systems (UASs) and ground-based sensors within complex terrain (de Boer et al., 2020a). Each day of the field campaign had specific science themes. The morning boundary layer transition, aerosol properties and their variability, valley drainage flows,

deep convection initiation, and turbulence profiling were the major scientific topics sampled throughout the project.

Turbulence measurements in the atmospheric boundary layer are scarce and are usually constrained to the surface layer even as turbulence metrics are critical for applications like wind energy (Bodini et al., 2019b; Lundquist and Bariteau, 2015; Wildmann et al., 2019), aviation (Muñoz-Esparza et al., 2018; Sharman and Pearson, 2017), and atmospheric aerosol transport (Fernando et al., 2010; Lundquist and Chan, 2007). Furthermore, turbulence measurements are used in improving low-level turbulence forecasting in numerical weather prediction models. UASs and remote sensors offer high-resolution measurements of atmospheric variables that can be used to expand turbulence measurements across multiple vertical and horizontal scales.

One turbulence proxy that has been linked to high variability of hub-height wind speed predicted by the Weather and Research Forecasting (WRF) model is dissipation of turbulence kinetic energy (Berg et al., 2019; Yang et al., 2017). Turbulence dissipation rate displays high temporal and spatial variability in complex terrain (Bodini et al., 2019a). The dissipation of turbulence kinetic energy is usually evaluated using in situ high-temporal resolution measurements (Lundquist and Bariteau, 2015; Oncley et al., 1996; Piper and Lundquist, 2004). However, recent studies have shown remote sensors can also be used to derive turbulence metrics (Bodini et al., 2018, 2019a; O'Connor et al., 2010; Wildmann et al., 2019).

Three Doppler lidars were deployed during the LAPSE-RATE field campaign to sample the lower atmospheric boundary layer (Bell et al., 2021). Here, we retrieve turbulence dissipation rate from these lidar measurements. We provide a brief description of the platforms deployed and used herein in Sect. 2. Section 3 describes the procedure for estimating turbulence dissipation rate from lidar measurements, and we show some sample data on Sect. 4. In Sect. 5 we perform an uncertainty analysis in the estimation of turbulence dissipation rate. Finally, Sects. 6 and 7 are dedicated to a summary and data availability, respectively.

2 Observations

Three Doppler lidars were deployed in the San Luis Valley to provide a reference dataset for UAS observations. The University of Oklahoma (OU) deployed the Collaborative Lower Atmospheric Mobile Profiling System (CLAMPS) that contains a Halo Streamline scanning Doppler lidar, a HAT-PRO microwave radiometer (Rose et al., 2005), and an Atmospheric Emitted Radiance Interferometer (Wagner et al., 2019). The University of Colorado Boulder (CU) deployed two Leosphere/NRG Version 1 WindCube profiling Doppler lidars (Aitken et al., 2012; Rhodes and Lundquist, 2013). Table 1 presents the technical specifications for the lidars.

Table 1. Main technical specifications of the lidars used in this study.

	WindCube v1 (WC49 & WC68)	Halo Streamline
Wavelength [μm]	1.54	1.54
Receiver bandwidth [MHz]	± 55	± 25
Nyquist velocity [m s^{-1}]	42.3	19.4
Signal spectral width ($\Delta\nu$) [m s^{-1}]	3.39	1.5
Pulses averaged (n)	10 000	20 000
Points per range gate (M)	25	10
Vertical resolution [m]	20	20
Minimum range gate [m]	20	15
Number of range gates	10	320
Pulse width [ns]	200	150
Time resolution [Hz]	~ 1	1

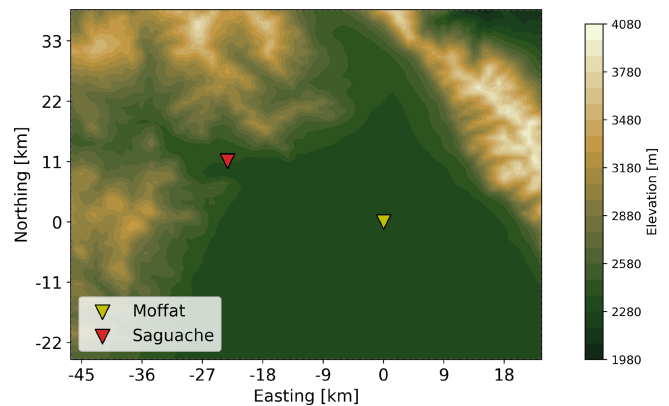


Figure 1. Map of the relevant locations during the LAPSE-RATE field campaign. Elevation contours are shown every 100 m. Distances measured from the Moffat site.

The Halo Streamline and one WindCube v1 (hereafter referred to as WC49) lidars were generally located at the Moffat site. The remaining WindCube lidar from CU (hereafter referred to as WC68) was located at the Saguache site, although the CU lidars were collocated for a brief period on 14 July from 00:04 to 21:44 UTC at Saguache. The relative location of each site is shown in Fig. 1.

The scan strategy for the Halo Streamline consisted of a 24-point plan position indicator (PPI) scan at 70° elevation, a 6-point PPI at 45° , and a vertical stare. Here, we use the 24-point scan to estimate the horizontal wind vector at a 5 min temporal resolution and the vertical stare to derive turbulence characteristics of the flow at a ~ 1.5 s temporal resolution. The WindCube lidars measure line-of-sight velocity along the four cardinal directions at a 62° elevation. The wind vector is estimated every 4 s using the Doppler beam swinging approach (Lundquist et al., 2015). A more complete description of the three platforms can be found in Bell et al. (2021) including quality control on the data.

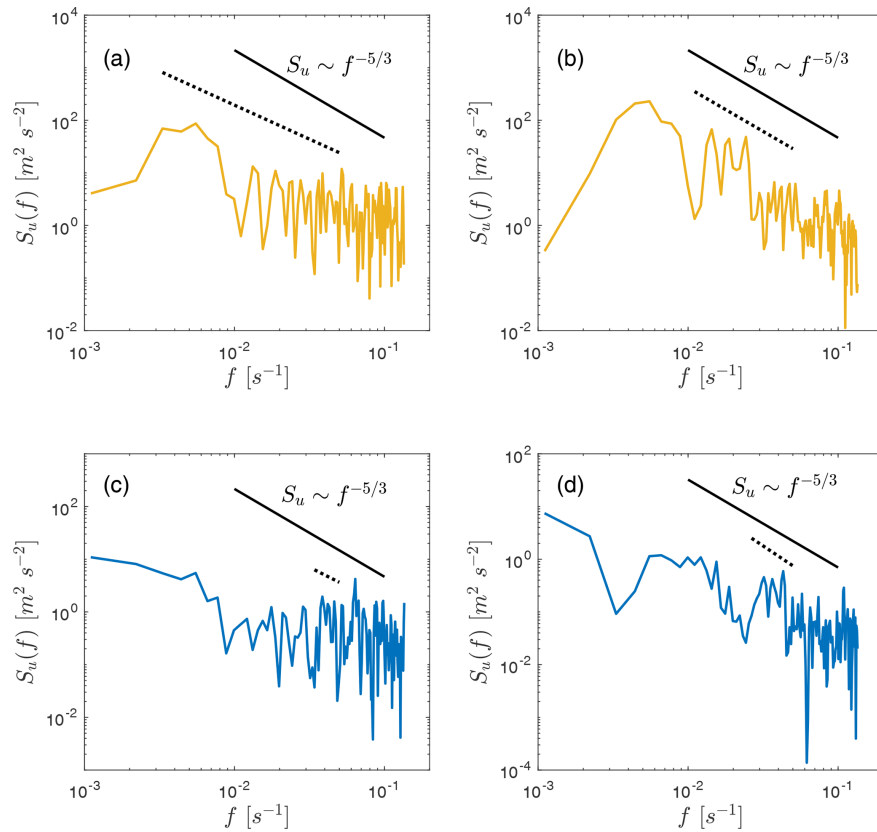


Figure 2. Example of smoothing spline fit of an experimental spectrum of the line-of-sight velocity measured by one beam of the WC49 (a, c) and WC68 (b, d) lidars at 120 m above the surface. The top panels represent daytime conditions on 14 July 17:30 UTC, and the bottom panels represent nighttime conditions on 14 July 07:00 UTC. Turbulence dissipation at this time was $643 \times 10^{-3} \text{ m}^2 \text{ s}^{-3}$ for the WC49 and $615 \times 10^{-3} \text{ m}^2 \text{ s}^{-3}$ for the WC68. The solid black line shows the theoretical $-5/3$ slope of the spectrum in the inertial subrange. The dotted black line shows the slope of the power fit to the spectrum, starting from the transition frequency and ending at 0.05 Hz.

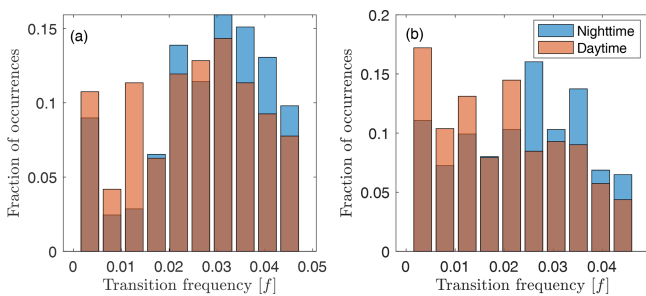


Figure 3. Transition frequency distributions for the WC49 (a) and WC68 (b) lidars during nighttime and daytime conditions.

3 Turbulence dissipation rate from Doppler lidars

Doppler lidars offer insight into the variability of turbulence dissipation rate in complex terrain. Moreover, lidars provide atmospheric measurements at higher altitudes than in situ sensors, extending the spatial sampling of the boundary layer beyond surface-based towers.

We estimate turbulence dissipation rate (ε) from the variance of the line-of-sight velocity following the methodology proposed by O’Connor et al. (2010) and refined by Bodini et al. (2018). The turbulence energy spectrum within the inertial subrange for homogeneous and isotropic turbulence can be expressed as a function of wavenumber k (Kolmogorov, 1941):

$$S(k) = a\varepsilon^{2/3}k^{-5/3}, \tag{1}$$

where $a \approx 0.52$ is the one-dimensional Kolmogorov constant. Equation (1) can be integrated over the wavenumber space within the inertial subrange. Furthermore, Taylor’s frozen turbulence hypothesis relates the wavenumber k with a length scale $L = 2\pi/k$, resulting in the following:

$$\begin{aligned} \sigma_v^2 &= \int_k^{k_1} S(k) dk = -\frac{3}{2}a\varepsilon^{2/3} \left(k_1^{-2/3} - k^{-2/3} \right) \\ &= \frac{3}{2}a \left(\frac{\varepsilon}{2\pi} \right)^{2/3} \left(L_N^{2/3} - L_1^{2/3} \right), \end{aligned} \tag{2}$$

where L_1 is the length scale for a single lidar sample, L_N is the length scale for a number N of samples used for the calculation ($L_N = NL_1$), and σ_v^2 is the variance of the detrended line-of-sight velocity from N samples. The length scale L_1 is defined as

$$L_1 = Ut + 2z \sin\left(\frac{\theta}{2}\right), \quad (3)$$

where U is the horizontal wind speed, t is the dwell time, z is the height above the surface, and θ is the half-angle divergence of the lidar beam. Doppler lidars generally have $\theta < 0.1$ mrad, and so the second term in Eq. (3) can be neglected.

This method for estimating the rate of dissipation of turbulence kinetic energy is based on the assumption that the samples used in the calculation reside within the inertial subrange of turbulence. Therefore, if either a too long or too short sample length N is used, an underestimation or overestimation of ε , respectively, will occur (Bodini et al., 2018). We estimate the sample length by determining the extension of the inertial subrange from an experimental fit to the turbulence spectrum.

3.1 WindCube v1 lidar

For the WindCube lidars, σ_v^2 is estimated as the average of the four beams and horizontal wind speed U is derived from the line-of-sight measurements from the different beams.

The WindCube lidars operated in profiling mode rather than in vertical stare mode; we therefore estimate the sample length N from the 15 min turbulence spectrum using a power fit to the data (Fig. 2). We filter out frequencies greater than 0.05 Hz, which are affected by instrumental noise (Frehlich, 2001). We find the power fit to the data between each frequency ($f < 0.05$ Hz) and the cut-off frequency (0.05 Hz). Then, the sample length is obtained from the frequency that gives a power fit with the best agreement with Kolmogorov $f^{-5/3}$ law. In such a way, we force the sample length to be calculated from the portion of the spectrum that shows the highest agreement with the energy cascade. A statistical analysis on the difference between the power law fit for each spectrum and the Kolmogorov law shows only the upper range gates diverge from the expected $f^{-5/3}$ law for both nighttime and daytime conditions (not shown). Figure 2 shows the turbulence spectrum estimated from the WindCube lidars when they were co-located at the Saguache site. The WC49 and WC68 lidars exhibit the transition frequency at 3.3×10^{-3} and $1.1 \times 10^{-2} \text{ s}^{-1}$, respectively, for daytime conditions (Fig. 2a, b) and 7.7×10^{-3} and $2.65 \times 10^{-2} \text{ s}^{-1}$, respectively, for nighttime conditions (Fig. 2c, d).

As expected, daytime conditions evidence smaller transition frequencies to the inertial subrange compared to nighttime conditions for both lidars (Fig. 3). During the day, convective conditions contribute energy at larger scales than during the night. Transition frequencies to the inertial subrange

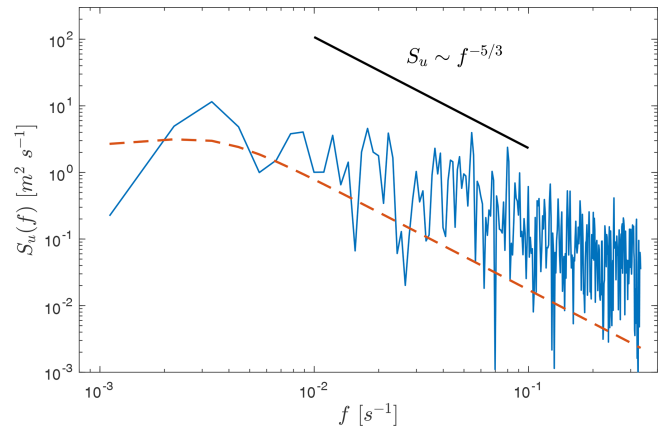


Figure 4. Example of model fit to experimental spectrum of the line-of-sight velocity measured by the Halo Streamline lidar at 105 m above the surface on 15 July at 01:23 UTC. Turbulence dissipation at this time was $118 \times 10^{-2} \text{ m}^2 \text{ s}^{-3}$. The red dashed line shows the spectrum fit. The solid black line shows the theoretical $-5/3$ slope of the spectrum in the inertial subrange.

are consistently smaller for the WC68 lidar compared to the WC49 lidar, especially during the night. The WC68 lidar is closely surrounded by complex terrain and the exit of a valley that modifies turbulence close to the surface, whereas the WC49 lidar is located further away from terrain features.

3.2 Halo Streamline lidar

For the Halo Streamline, the variance of the line-of-sight velocity σ_v^2 is calculated from the vertically pointing beam and wind speed U is retrieved from a sine-wave fit to the vertical-azimuth display (VAD) scans every 5 min as provided by Bell et al. (2021).

We estimate the sample length N by fitting the general kinematic spectral model for a vertical velocity field proposed by Kristensen et al. (1989) to the vertical velocity spectra:

$$\frac{S(k)}{\sigma_w^2} = \frac{l_w}{2\pi} \frac{1 + \frac{8}{3} \left(\frac{l_w k}{a(\mu)}\right)^{2\mu}}{\left[1 + \left(\frac{l_w k}{a(\mu)}\right)^{2\mu}\right]^{\frac{5}{6\mu} + 1}}, \quad (4)$$

where

$$a(\mu) = \frac{\pi \mu \Gamma\left(\frac{5}{6\mu}\right)}{\Gamma\left(\frac{1}{2\mu}\right) \Gamma\left(\frac{1}{3\mu}\right)}, \quad (5)$$

and μ regulates the curvature of the turbulence spectrum; we use $\mu = 1.5$ as recommended by Lothon et al. (2009). The turbulence spectrum $S(k)$ is obtained from 15 min of data, and we filter out frequencies greater than 0.08 Hz, which are affected by instrumental noise (Frehlich, 2001). The transition wavelength to the inertial subrange can be written as a

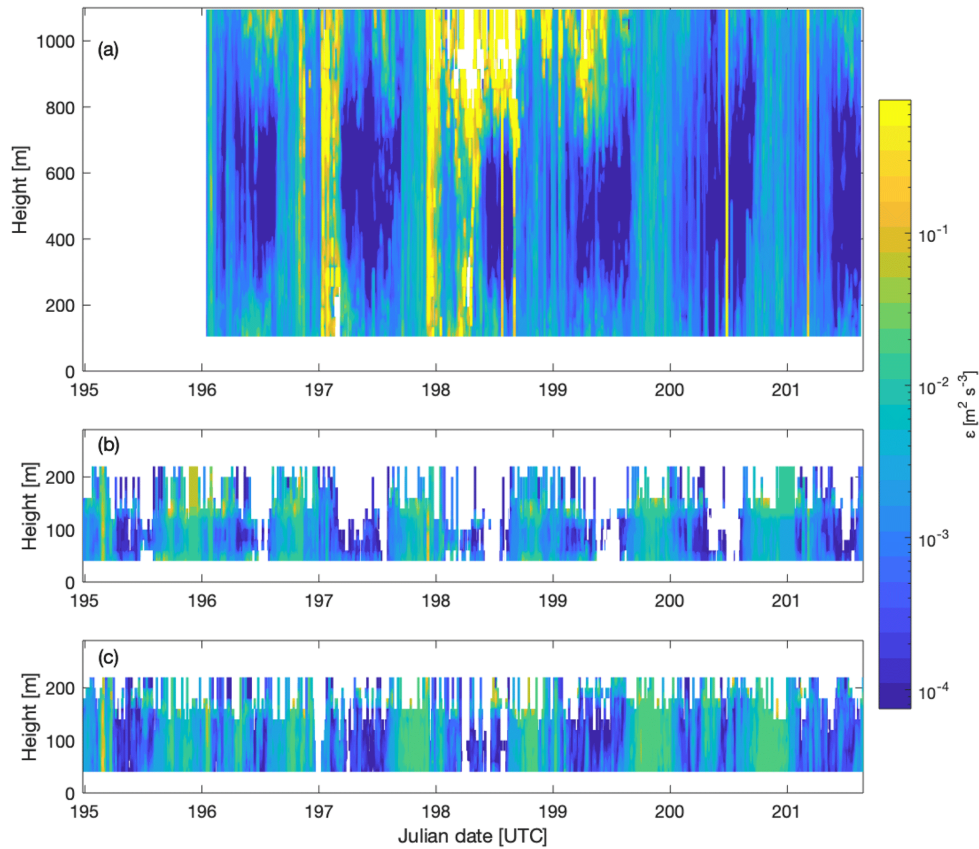


Figure 5. Time–height contours of 30 min averaged turbulence dissipation rate for the Halo Streamline (a), WindCube WC49 (b), and WindCube WC68 (c) for the duration of the field campaign.

function of the integral scale l_w and μ as follows:

$$\lambda_w = \frac{2\pi l_w}{a(\mu)} \left\{ \frac{5}{3} \sqrt{\mu^2 + \frac{6}{5}\mu + 1} - \left(\frac{5}{3}\mu + 1 \right) \right\}^{1/2\mu}. \quad (6)$$

The sample length is obtained by dividing the transition wavelength by the wind speed derived from the closest VAD scan and vertical velocity dwell time. Figure 3 shows an example of the experimental and modeled turbulence spectrum for the Halo lidar.

3.3 Noise removal

The final step in estimating ε is removing the contribution of instrumental noise to the velocity variance. The velocity variance calculated from lidar measurements is a combination of atmospheric turbulence σ_U^2 , instrumental noise σ_e^2 , and variations in the aerosol terminal fall velocity in the sampled volume σ_d^2 , all of which can be assumed to be independent of one another:

$$\sigma_v^2 = \sigma_U^2 + \sigma_e^2 + \sigma_d^2. \quad (7)$$

According to Pearson et al. (2009), the contribution from instrumental noise can be expressed as follows:

$$\sigma_e^2 = \frac{\Delta v^2 \sqrt{8}}{\alpha N_p} \left(1 + \frac{\alpha}{\sqrt{2\pi}} \right)^2, \quad (8)$$

where the lidar photon count to speckle count (α) can be estimated as a function of bandwidth (B):

$$\alpha = \frac{\text{SNR}}{\sqrt{2\pi}} \frac{B}{\Delta v}, \quad (9)$$

and the accumulated photon count (N_p) can be estimated as a function of the lidar signal-to-noise ratio (SNR) as

$$N_p = \text{SNRnM}. \quad (10)$$

See Table 1 for a complete description of the nomenclature. Therefore, turbulence dissipation rate can be calculated, using the appropriate sample length N , by means of Eq. (11).

$$\varepsilon = 2\pi \left(\frac{2}{3a} \right)^{\frac{3}{2}} \left(\frac{\sigma_v^2 - \sigma_e^2}{L_N^{\frac{2}{3}} - L_1^{\frac{2}{3}}} \right)^{3/2} \quad (11)$$

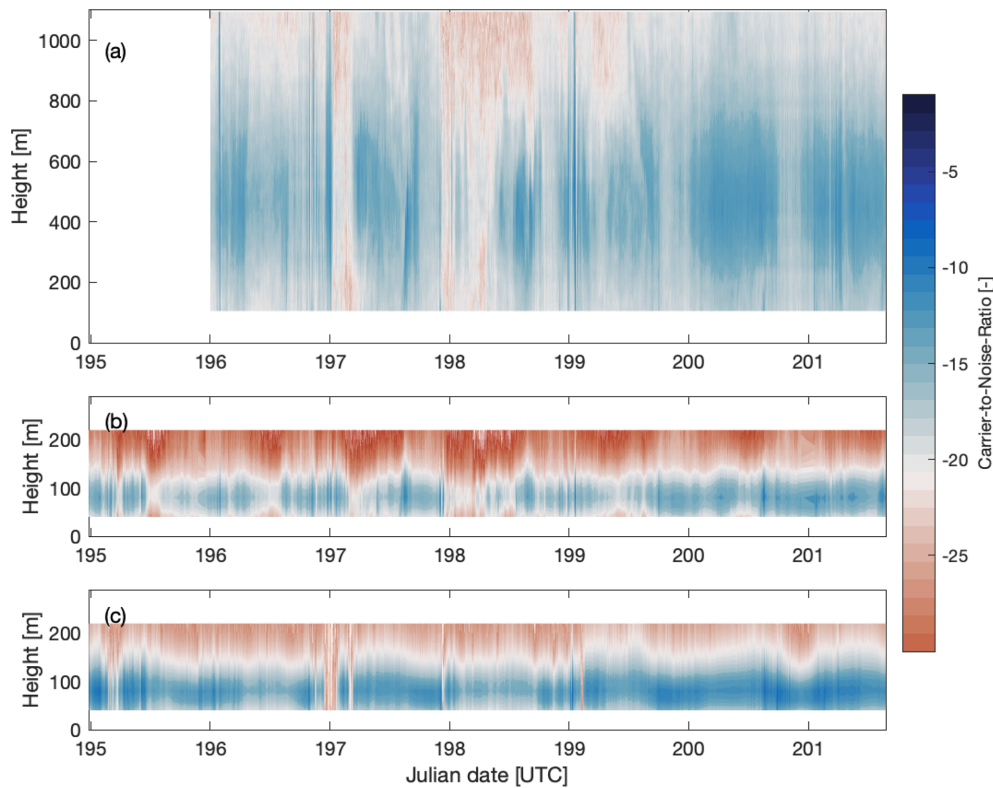


Figure 6. Time–height contours of carrier-to-noise ratio for the vertical velocity measured by the Halo Streamline (a), the horizontal velocity measured by the WindCube WC49 (b), and the horizontal velocity measured by the WindCube WC68 (c) for the duration of the field campaign. Data with CNR values above -21 are used for the calculations (blue shading), whereas data with CNR below -21 are discarded (red shading).

4 Sample data

Turbulence dissipation rate estimated from each lidar exhibits large variability throughout the whole field campaign (Fig. 4). High values of ε ($\sim 10^{-3}$) generally occur during the day and low values ($\sim 10^{-4}$) occur during nighttime, as seen by lidar estimates in other locations (Bodini et al., 2018, 2019a; Muñoz-Esparza et al., 2018; Wildmann et al., 2019). Furthermore, the surface layer exhibits larger dissipation than the boundary layer (Fig. 4a), consistent with the in situ measurements of Balsley et al. (2006). Data for the first three range gates in the Halo lidar were discarded because the vertical velocity variance remained constant in time. This artifact is common on Halo Doppler lidars and has been previously reported (Pearson et al., 2009).

The WindCube lidar located at the Moffat site (WC49) suffers from some data gaps in the estimation of turbulence dissipation (Fig. 4b). This lidar exhibits low carrier-to-noise-ratio (CNR) values throughout the sampling period, especially during nighttime (Fig. 5). Therefore, the contribution of instrumental noise to the velocity variance results in $\sigma_e^2 > \sigma_v^2$, invalidating the assumptions made in Eq. (7).

The two lidars co-located at the Moffat site provide the opportunity to compare turbulence dissipation rates calcu-

lated from different platforms (Fig. 6), as was previously done with the Halo and WindCube lidars (Bodini et al., 2018) at a different location with different scanning strategy for the Halo. The Pearson correlation coefficient for $\log_{10}\varepsilon$ recorded at 105, 135, and 160 m between both lidars at Moffat is 0.26851, 0.19065, and 0.12751, respectively. Furthermore, the R^2 values for these heights are 0.0721, 0.0363, and 0.0163, respectively. This poor agreement demonstrates that the assumptions and methodology for estimating ε from two scanning techniques provide very different results within the surface layer. One source of discrepancy in the calculations of ε is the horizontal velocity estimated from the VAD scan for the Halo Streamline and from the four beams for the WindCube lidars. The horizontal velocity for the VAD scan is estimated every 5 min, removing high wind speed gusts, whereas horizontal wind speed is calculated every 4 s for the WindCubes. Also, the dissipation rate estimated from the Halo Streamline displays much larger values and higher variability over shorter timescales, whereas the WindCube evidences larger variability over longer time periods.

Turbulence dissipation rate also varies spatially (Fig. 8). Surprisingly, the Pearson correlation coefficient between the two WindCube lidars at the different sites is 0.64637, 0.6388, 0.43664, and 0.37147 at 75, 105, 135, and 160 m, respec-

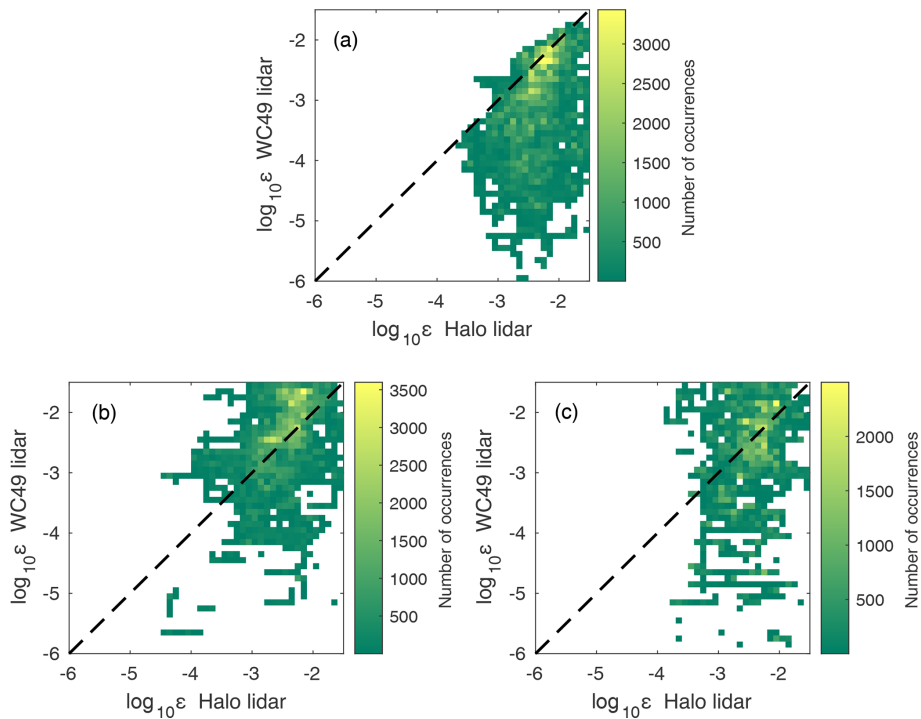


Figure 7. Heat map of $\log_{10} \epsilon$ showing scanning technique variability at the Moffat site for both lidars at 105 m (a), 135 m (b), and 160 m (c). The shading indicates the number of occurrences of each value of $\log_{10} \epsilon$ for each lidar. The values of turbulence dissipation rate are averaged over a 30 min time period. The black dashed line shows a 1 : 1 relationship.

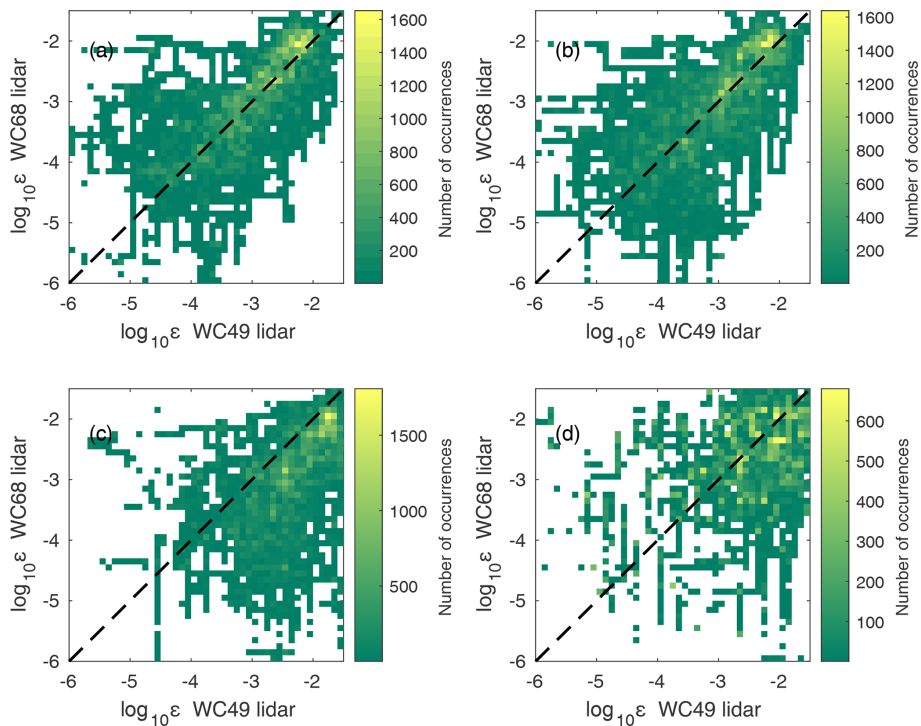


Figure 8. Heat map of $\log_{10} \epsilon$ showing the spatial variability for both WindCube lidars at 75 m (a), 105 m (b), 135 m (c), and 160 m (d). The shading indicates the number of occurrences of each value of $\log_{10} \epsilon$ for each lidar. The values of turbulence dissipation rate are averaged over a 30 min time period. The black dashed line shows a 1 : 1 relationship.

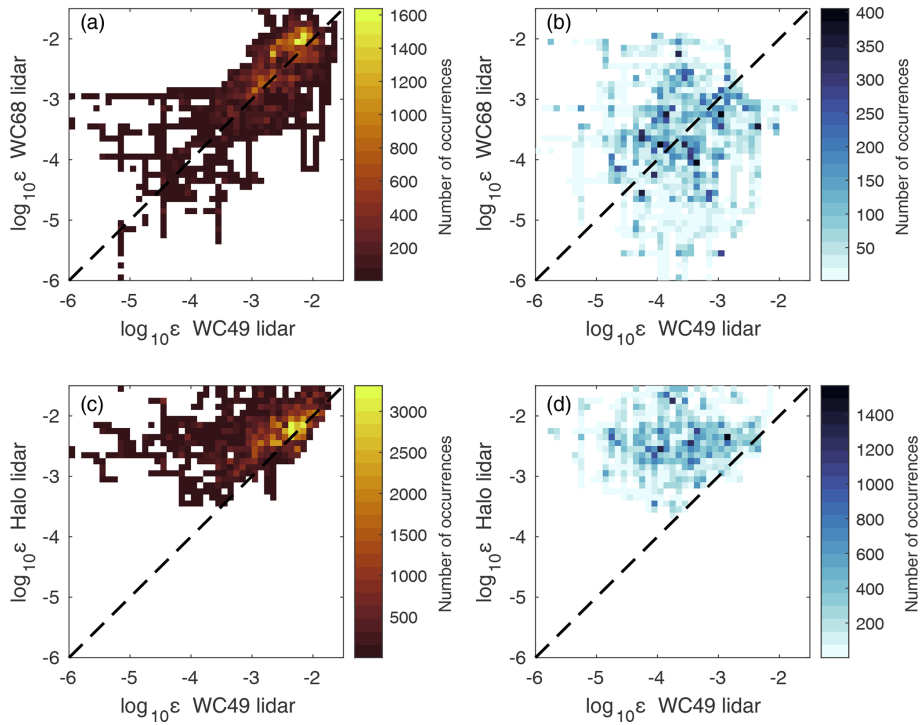


Figure 9. Heat map of $\log_{10}\epsilon$ estimated at 100 m showing the spatial variability for both WindCube lidars (a, b) and the platform variability for the WindCube and Halo lidars (c, d). The shading indicates the number of occurrences of each value of $\log_{10}\epsilon$ for each lidar; warm shading corresponds to daytime and cool shading to nighttime. The values of turbulence dissipation rate are averaged over a 30 min time period. The black dashed line shows a 1 : 1 relationship.

tively. Furthermore, the R^2 values for these heights are 0.4178, 0.4081, 0.1907, and 0.1380, respectively. The higher correlation between both WindCube lidars compared to the lidars at the Moffat site may be partly explained by their same scanning technique (and resulting temporal averaging) and dissimilar weighting function between the Halo and WindCube lidars. Also, both WindCube lidars display a strong diurnal variability in turbulence dissipation close to the surface that is not observed in the Halo lidar, perhaps due to the Halo’s larger measurement volume (Fig. 4).

We observe a higher correlation in turbulence dissipation for all lidars during the day compared to the night (Fig. 8). Although there is a higher correlation between both WindCube lidars during daytime ($R^2 = 0.56$ for daytime and $R^2 = 0.02$ for nighttime), the Pearson correlation coefficient suggests ϵ follows the same trend during the day and night ($R = 0.75$ for daytime and $R = 0.14$ for nighttime). For both lidars located at the Moffat site, we obtain a Pearson correlation coefficient of 0.25 during daytime and 0.32 during nighttime for ϵ estimated at 100 m above the ground. Moreover, a straight line fit to the data suggests ϵ estimated from the Halo lidar is consistently several orders of magnitude larger than ϵ estimated from the WindCube.

5 Uncertainty analysis

We apply the law of combination of errors to estimate the uncertainty in the retrievals of ϵ from random error propagating through our calculations (Barlow, 1989). Assuming $f(x_i)$ is a function of x_i -independent and uncorrelated variables, then the variance in f , approximated by σ_f^2 , is given by

$$\sigma_f^2 = \left(\frac{\partial f}{\partial x_i} \right)^2 \sigma_{x_i}^2, \tag{12}$$

where $\sigma_{x_i}^2$ is the sample variances in the x_i variables. Using this method, we estimate the uncertainty in the retrievals of ϵ from the uncertainty in the line-of-sight velocity variance:

$$\begin{aligned} \sigma_{\epsilon,v} &= \left(\frac{\partial \epsilon}{\partial \sigma_v} \right)^2 \sigma_{\sigma,v}^2 \\ &= 2\pi \left(\frac{2}{3\alpha} \right)^{\frac{3}{2}} \left(\frac{\sigma_v^2 - \sigma_e^2}{L_N^{\frac{2}{3}} - L_1^{\frac{2}{3}}} \right)^{\frac{1}{2}} \frac{3\sigma_v}{L_N^{\frac{2}{3}} - L_1^{\frac{2}{3}}} \sigma_{\sigma,v} \\ &= \epsilon \frac{3\sigma_v}{L_N^{\frac{2}{3}} - L_1^{\frac{2}{3}}} \sigma_{\sigma,v}, \end{aligned} \tag{13}$$

where $\sigma_{\sigma,v}$ is the uncertainty in the sample variance. Although $\sigma_{\sigma,v}$ is not directly measured, it is conventionally con-

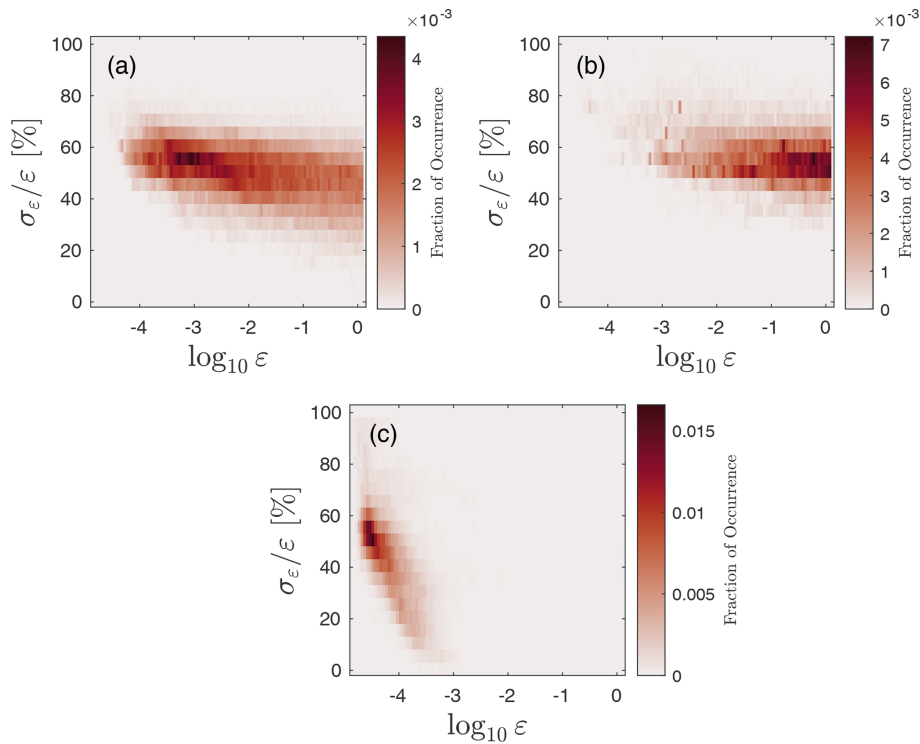


Figure 10. Fraction of occurrence of each uncertainty estimation and turbulence dissipation rate combination for the WC49 (a), WC68 (b), and Halo (c) lidars.

sidered to be of the same order of magnitude as the instrument noise (i.e., σ_ϵ).

In general, small values of ϵ are associated with large uncertainties (Fig. 10). The WC68 and Halo lidars display decreasing uncertainties as the estimated turbulence dissipation rate increases. However, the uncertainty in ϵ for the WC68 lidar consistently remains much larger compared to the Halo lidar for all values of ϵ . Conversely, uncertainties for the WC49 remain nearly constant for the estimated ϵ values. The WC49 lidar exhibits the smallest carrier-to-noise ratios for the three lidars throughout the measuring period (Fig. 6), which is associated with the instrument noise as shown in Eq. (8).

6 Data availability

The data in this paper are available for download at <https://doi.org/10.5281/zenodo.4399967> (Sanchez Gomez and Lundquist, 2020). The dataset is structured following guidance of de Boer et al. (2020a).

7 Summary

Scientists from multiple research institutions gathered on July 2018 in the San Luis Valley, Colorado, to gather observational data of the atmospheric boundary layer using ground-based and aerial platforms. The University of Ok-

lahoma and University of Colorado Boulder deployed three Doppler lidars throughout the campaign to collect vertical profiles of the kinematic state of the atmosphere. Here, we describe the methodology for estimating turbulence dissipation rate using a vertical staring lidar and two profiling lidars and provide some analysis of the temporal and spatial variability of this metric. We find high temporal variability in turbulence dissipation throughout the whole field campaign. Furthermore, the turbulence dissipation rate close to the surface estimated from different platforms at the same site displays significant differences for daytime and nighttime periods. The Halo lidar shows lower variability of turbulence dissipation in the surface layer compared to the WindCube lidar. In contrast, the WindCube lidars, although at several kilometers from one another, exhibit a higher correlation in turbulence dissipation, especially during the day.

Author contributions. MSG performed the calculations, analyzed the data, and prepared the initial draft. JKL guided the data collection, data processing, and quality control for the WindCube lidars. MSG and JKL contributed to manuscript revision. TMB and PMK guided the data collection, data processing, and quality control for the Halo Streamline lidar.

Competing interests. The authors declare that they have no conflict of interest.

Disclaimer. Publisher's note: Copernicus Publications remains neutral with regard to jurisdictional claims in published maps and institutional affiliations.

Special issue statement. This article is part of the special issue "Observational and model data from the 2018 Lower Atmospheric Process Studies at Elevation – a Remotely-piloted Aircraft Team Experiment (LAPSE-RATE) campaign". It is not associated with a conference.

Financial support. This research has been supported by the National Science Foundation, Directorate for Geosciences (grant no. AGS-1554055). Funding was provided by the U.S. Department of Energy Office of Energy Efficiency and Renewable Energy Wind Energy Technologies Office.

Review statement. This paper was edited by Suzanne Smith and reviewed by two anonymous referees.

References

- Aitken, M. L., Rhodes, M. E., and Lundquist, J. K.: Performance of a Wind-Profiling Lidar in the Region of Wind Turbine Rotor Disks, *J. Atmos. Ocean. Tech.*, 29, 347–355, <https://doi.org/10.1175/JTECH-D-11-00033.1>, 2012.
- Balsley, B. B., Frehlich, R. G., Jensen, M. L., and Meillier, Y.: High-Resolution In Situ Profiling through the Stable Boundary Layer: Examination of the SBL Top in Terms of Minimum Shear, Maximum Stratification, and Turbulence Decrease, *J. Atmos. Ocean. Tech.*, 63, 1291–1307, <https://doi.org/10.1175/JAS3671.1>, 2006.
- Barlow, R.: *Statistics: a guide to the use of statistical methods in the physical sciences*, Wiley, Chichester, England, New York, 204 pp., 1989.
- Bell, T. M., Klein, P. M., Lundquist, J. K., and Waugh, S.: Remote-sensing and radiosonde datasets collected in the San Luis Valley during the LAPSE-RATE campaign, *Earth Syst. Sci. Data*, 13, 1041–1051, <https://doi.org/10.5194/essd-13-1041-2021>, 2021.
- Berg, L. K., Liu, Y., Yang, B., Qian, Y., Olson, J., Pekour, M., Ma, P.-L., and Hou, Z.: Sensitivity of Turbine-Height Wind Speeds to Parameters in the Planetary Boundary-Layer Parametrization Used in the Weather Research and Forecasting Model: Extension to Wintertime Conditions, *Bound.-Lay. Meteorol.*, 170, 507–518, <https://doi.org/10.1007/s10546-018-0406-y>, 2019.
- Bodini, N., Lundquist, J. K., and Newsom, R. K.: Estimation of turbulence dissipation rate and its variability from sonic anemometer and wind Doppler lidar during the XPIA field campaign, *Atmos. Meas. Tech.*, 11, 4291–4308, <https://doi.org/10.5194/amt-11-4291-2018>, 2018.
- Bodini, N., Lundquist, J. K., Krishnamurthy, R., Pekour, M., Berg, L. K., and Choukulkar, A.: Spatial and temporal variability of turbulence dissipation rate in complex terrain, *Atmos. Chem. Phys.*, 19, 4367–4382, <https://doi.org/10.5194/acp-19-4367-2019>, 2019a.
- Bodini, N., Lundquist, J. K., and Kirincich, A.: U.S. East Coast Lidar Measurements Show Offshore Wind Turbines Will Encounter Very Low Atmospheric Turbulence, *Geophys. Res. Lett.*, 46, 5582–5591, <https://doi.org/10.1029/2019GL082636>, 2019b.
- de Boer, G., Houston, A., Jacob, J., Chilson, P. B., Smith, S. W., Argrow, B., Lawrence, D., Elston, J., Brus, D., Kemppinen, O., Klein, P., Lundquist, J. K., Waugh, S., Bailey, S. C. C., Frazier, A., Sama, M. P., Crick, C., Schmale III, D., Pinto, J., Pillar-Little, E. A., Natalie, V., and Jensen, A.: Data generated during the 2018 LAPSE-RATE campaign: an introduction and overview, *Earth Syst. Sci. Data*, 12, 3357–3366, <https://doi.org/10.5194/essd-12-3357-2020>, 2020a.
- de Boer, G., Diehl, C., Jacob, J., Houston, A., Smith, S. W., Chilson, P., Schmale, D. G., Intrieri, J., Pinto, J., Elston, J., Brus, D., Kemppinen, O., Clark, A., Lawrence, D., Bailey, S. C. C., Sama, M. P., Frazier, A., Crick, C., Natalie, V., Pillar-Little, E., Klein, P., Waugh, S., Lundquist, J. K., Barbieri, L., Kral, S. T., Jensen, A. A., Dixon, C., Borenstein, S., Hesselius, D., Human, K., Hall, P., Argrow, B., Thornberry, T., Wright, R., and Kelly, J. T.: Development of Community, Capabilities, and Understanding through Unmanned Aircraft-Based Atmospheric Research: The LAPSE-RATE Campaign, *B. Am. Meteorol. Soc.*, 101, E684–E699, <https://doi.org/10.1175/BAMS-D-19-0050.1>, 2020b.
- Fernando, H. J. S., Zajic, D., Di Sabatino, S., Dimitrova, R., Hedquist, B., and Dallman, A.: Flow, turbulence, and pollutant dispersion in urban atmospheres, *Phys. Fluids*, 22, 051301, <https://doi.org/10.1063/1.3407662>, 2010.
- Frehlich, R.: Estimation of Velocity Error for Doppler Lidar Measurements, *J. Atmos. Ocean. Tech.*, 18, 1628–1639, 2001.
- Kolmogorov, A. N.: Dissipation of energy in locally isotropic turbulence, *Dokl. Akad. Nauk SSSR*, 32, 16–18, 1941.
- Kristensen, L., Lenschow, D. H., Kirkegaard, P., and Courtney, M.: The spectral velocity tensor for homogeneous boundary-layer turbulence, *Bound.-Lay. Meteorol.*, 47, 149–193, <https://doi.org/10.1007/BF00122327>, 1989.
- Lothon, M., Lenschow, D. H., and Mayor, S. D.: Doppler Lidar Measurements of Vertical Velocity Spectra in the Convective Planetary Boundary Layer, *Bound.-Lay. Meteorol.*, 132, 205–226, <https://doi.org/10.1007/s10546-009-9398-y>, 2009.
- Lundquist, J. K. and Bariteau, L.: Dissipation of Turbulence in the Wake of a Wind Turbine, *Bound.-Lay. Meteorol.*, 154, 229–241, <https://doi.org/10.1007/s10546-014-9978-3>, 2015.
- Lundquist, J. K. and Chan, S. T.: Consequences of Urban Stability Conditions for Computational Fluid Dynamics Simulations of Urban Dispersion, *J. Appl. Meteorol. Clim.*, 46, 1080–1097, <https://doi.org/10.1175/JAM2514.1>, 2007.
- Lundquist, J. K., Churchfield, M. J., Lee, S., and Clifton, A.: Quantifying error of lidar and sodar Doppler beam swinging measurements of wind turbine wakes using computational fluid dynamics, *Atmos. Meas. Tech.*, 8, 907–920, <https://doi.org/10.5194/amt-8-907-2015>, 2015.
- Muñoz-Esparza, D., Sharman, R. D., and Lundquist, J. K.: Turbulence Dissipation Rate in the Atmospheric Boundary Layer: Observations and WRF Mesoscale Modeling during the XPIA Field Campaign, *Mon. Weather Rev.*, 146, 351–371, <https://doi.org/10.1175/MWR-D-17-0186.1>, 2018.
- O'Connor, E. J., Illingworth, A. J., Brooks, I. M., Westbrook, C. D., Hogan, R. J., Davies, F., and Brooks, B. J.: A Method for Estimating the Turbulent Kinetic Energy Dissipation Rate from a Vertically Pointing Doppler Lidar, and Independent Evaluation from Balloon-Borne In

- Situ Measurements, *J. Atmos. Ocean. Tech.*, 27, 1652–1664, <https://doi.org/10.1175/2010JTECHA1455.1>, 2010.
- Oncley, S. P., Friehe, C. A., Larue, J. C., Businger, J. A., Itsweire, E. C., and Chang, S. S.: Surface-Layer Fluxes, Profiles, and Turbulence Measurements over Uniform Terrain under Near-Neutral Conditions, *J. Atmos. Ocean. Tech.*, 53, 1029–1044, [https://doi.org/10.1175/1520-0469\(1996\)053<1029:SLFPAT>2.0.CO;2](https://doi.org/10.1175/1520-0469(1996)053<1029:SLFPAT>2.0.CO;2), 1996.
- Pearson, G., Davies, F., and Collier, C.: An Analysis of the Performance of the UFAM Pulsed Doppler Lidar for Observing the Boundary Layer, *J. Atmos. Ocean. Tech.*, 26, 240–250, <https://doi.org/10.1175/2008JTECHA1128.1>, 2009.
- Piper, M. and Lundquist, J. K.: Surface Layer Turbulence Measurements during a Frontal Passage, *J. Atmos. Ocean. Tech.*, 61, 1768–1780, [https://doi.org/10.1175/1520-0469\(2004\)061<1768:SLTMDA>2.0.CO;2](https://doi.org/10.1175/1520-0469(2004)061<1768:SLTMDA>2.0.CO;2), 2004.
- Rhodes, M. E. and Lundquist, J. K.: The Effect of Wind-Turbine Wakes on Summertime US Midwest Atmospheric Wind Profiles as Observed with Ground-Based Doppler Lidar, *Bound.-Lay. Meteorol.*, 149, 85–103, <https://doi.org/10.1007/s10546-013-9834-x>, 2013.
- Rose, T., Crewell, S., Löhnert, U., and Simmer, C.: A network suitable microwave radiometer for operational monitoring of the cloudy atmosphere, *Atmos. Res.*, 75, 183–200, <https://doi.org/10.1016/j.atmosres.2004.12.005>, 2005.
- Sanchez Gomez, M. and Lundquist, J. K.: Turbulence dissipation rate estimated from Doppler Lidar measurements during LAPSE-RATE, Zenodo, <https://doi.org/10.5281/ZENODO.4731105>, 2020.
- Sharman, R. D. and Pearson, J. M.: Prediction of Energy Dissipation Rates for Aviation Turbulence. Part I: Forecasting Non-convective Turbulence, *J. Appl. Meteorol. Clim.*, 56, 317–337, <https://doi.org/10.1175/JAMC-D-16-0205.1>, 2017.
- Wagner, T. J., Klein, P. M., and Turner, D. D.: A New Generation of Ground-Based Mobile Platforms for Active and Passive Profiling of the Boundary Layer, *B. Am. Meteorol. Soc.*, 100, 137–153, <https://doi.org/10.1175/BAMS-D-17-0165.1>, 2019.
- Wildmann, N., Bodini, N., Lundquist, J. K., Bariteau, L., and Wagner, J.: Estimation of turbulence dissipation rate from Doppler wind lidars and in situ instrumentation for the Perdigão 2017 campaign, *Atmos. Meas. Tech.*, 12, 6401–6423, <https://doi.org/10.5194/amt-12-6401-2019>, 2019.
- Yang, B., Qian, Y., Berg, L. K., Ma, P.-L., Wharton, S., Bu-laevskaya, V., Yan, H., Hou, Z., and Shaw, W. J.: Sensitivity of Turbine-Height Wind Speeds to Parameters in Planetary Boundary-Layer and Surface-Layer Schemes in the Weather Research and Forecasting Model, *Bound.-Lay. Meteorol.*, 162, 117–142, <https://doi.org/10.1007/s10546-016-0185-2>, 2017.