

U.S. DEPARTMENT OF
ENERGY

Office of
**ENERGY EFFICIENCY &
RENEWABLE ENERGY**

Understanding Building Energy Use in Rural Climate Zone 3A:

Basic Building Stock Characterization

August 2023



Disclaimer

This work was prepared as an account of work sponsored by an agency of the United States Government. Neither the United States Government nor any agency thereof, nor any of their employees, nor any of their contractors, subcontractors or their employees, makes any warranty, express or implied, or assumes any legal liability or responsibility for the accuracy, completeness, or any third party's use or the results of such use of any information, apparatus, product, or process disclosed, or represents that its use would not infringe privately owned rights. Reference herein to any specific commercial product, process, or service by trade name, trademark, manufacturer, or otherwise, does not necessarily constitute or imply its endorsement, recommendation, or favoring by the United States Government or any agency thereof or its contractors or subcontractors. The views and opinions of authors expressed herein do not necessarily state or reflect those of the United States Government or any agency thereof, its contractors or subcontractors.

Authors

The authors of this report are:

Ry Horsey, Andrew Parker, Chris Caradonna, Matthew Dahlhausen, Lauren Klun, Amy LeBar, and Marlena Praprost, National Renewable Energy Laboratory

The technical managers of this report are:

Harry Bergmann, U.S. Department of Energy
Amir Roth, U.S. Department of Energy

Acknowledgments

The authors would like to acknowledge the valuable guidance and input provided during this report. The authors are grateful to the following list of contributors. Their feedback, guidance, and review is greatly appreciated by the authors.

Pacific Northwest National Laboratory: Bing Liu

Lawrence Berkeley National Laboratory: Paul Mathew, Cindy Regnier

U.S. Department of Energy: Ian Blanding, Billierae Engelman, and Ram Narayanamurthy

This report was prepared by the National Renewable Energy Laboratory for the U.S. Department of Energy, Office of Energy Efficiency and Renewable Energy, Building Technologies Office.

1 Overview

This report is part of a publication series that focuses on approximately 100 different local geographies, or “clusters.” Each report provides commercial and multifamily building characteristic and energy data for a local geography, with the intention of helping policymakers at the city, county and state levels better understand building energy use. Specifically, this report breaks down the building stock in the counties shown in Figure 1 by building type, size, energy consumption, and emissions.

Buildings emit greenhouse gases due to on-site fossil fuel use and offsite electricity generation. Addressing climate change requires improving building efficiency and reducing on-site fossil fuel combustion. Policymakers who want to reduce emissions will benefit from understanding the building stock because different types of policy interventions will be more applicable to certain types and sizes of buildings than others. Several questions are critical to ask and answer: What types of buildings use the most energy? How do emissions change with building size? How do emissions change by location?

Commercial building energy data are provided by the United States Energy Information Agency (EIA) for the nine U.S. census divisions, each of which covers multiple states (CBECS 2014). The EIA provides similar residential building data by state (RECS 2022). However, city, county, and state policymakers often need finer resolution to understand the building stock and guide decision-making. This report presents commercial and multifamily building energy data for the counties shown in Figure 1. The energy data in this report are broken out by building type and size.

1.1 What Types of Questions Can This Help Me Answer for My City, County, or Region?

- How many buildings exist, by type and size?
- Which buildings are responsible for the most emissions today, by type and size?
- How many buildings or what fraction of emissions are covered by a policy’s size threshold?
- How might a policy’s building size threshold impact equity?

1.2 What Types of Questions Will This Report *Not* Help Me Answer?

- What will the building stock, energy use, and emissions look like in the future?
- What metric and target levels are best for building energy policy?
- How should a policy acknowledge variation in use within a given building type?
- How will zoning and development changes impact building energy use?

1.3 How Were the Geographic Clusters Developed?

Clusters are formed on a county basis and depend on building type, age, and climate. Adjacent counties with similar commercial densities, types, and age distributions form a cluster. Clusters form regional groups if they belong to the same American Society of Heating, Refrigerating and Air-Conditioning Engineers (ASHRAE) climate zone. See Horsey, Rozenfeld, and Bergmann 2023 for more detail on the clustering method.

1.4 What Building Types Are Covered?

This report includes multifamily buildings over 10,000 square feet and the commercial buildings listed in Table 1. The commercial building types considered in this analysis represent two-thirds of annual commercial building site energy consumption across the entire United States.

This report excludes a number of building types not currently included in the underlying data. The omitted building types with the highest national energy use include colleges, laboratories, grocery stores, entertainment venues, recreation centers, religious buildings, and vehicle repair shops. Some of these may be added in the future. Information on omitted building types, such as counts, energy use, and floor area can be found in CBECS 2014.

Table 1. Building Stock Segments Covered in This Document

Sector	Building Type Group	Building Type
Commercial	Food Service	Full Service Restaurant Quick Service Restaurant
	Mercantile	Retail Strip Mall Retail Standalone
	Office	Small Office Medium Office Large Office
	Education	Primary School Secondary School
	Healthcare	Outpatient Hospital
	Lodging	Small Hotel Large Hotel
	Warehouse and Storage	Warehouse
Residential	Multifamily	Multifamily

1.5 Vintage

The analysis in this report is not segmented by vintage (year constructed). The data do not support the common perception that older commercial buildings have a higher energy use per square foot. For example, commercial buildings constructed between 2000 and 2018 have roughly 10% higher energy use per square foot than buildings constructed before 2000. There do not appear to be other energy use per square foot trends in the data (EIA 2022).

2 Geographies Covered in This Report

Figure 1 shows the map of the buildings covered in this report. Appendix A lists the counties and county equivalents included in the map.

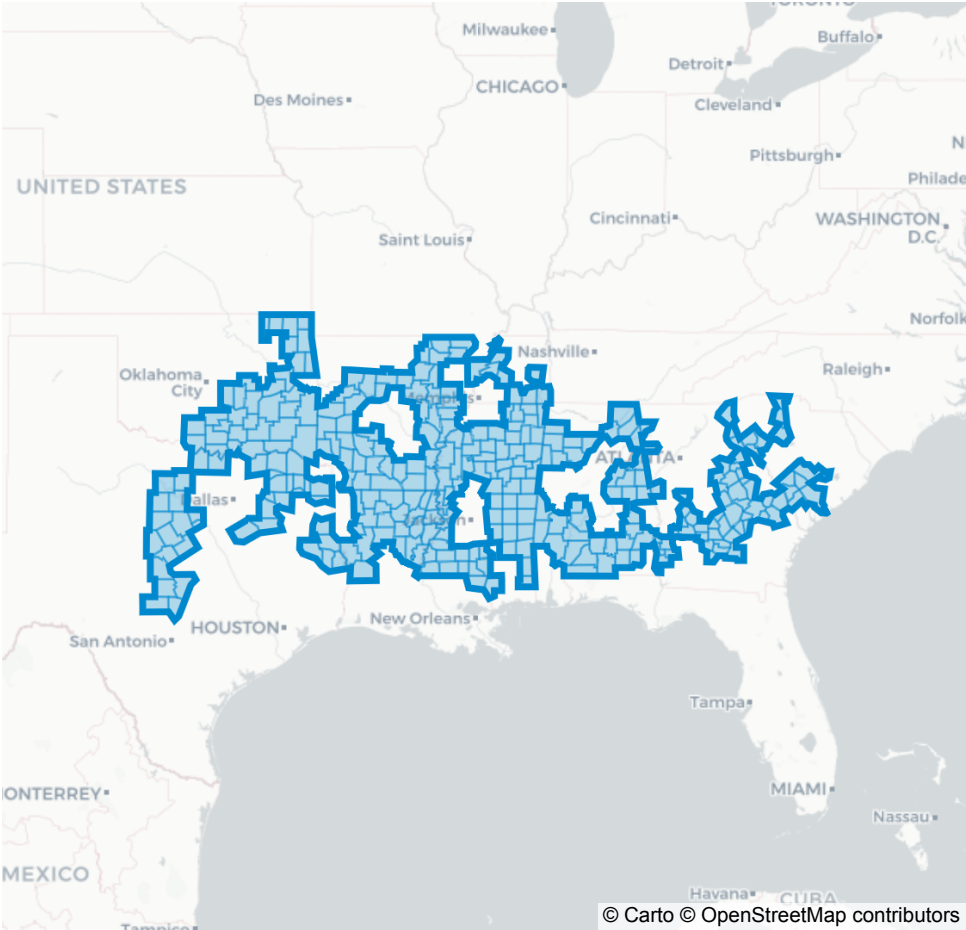


Figure 1. Map showing the cluster of counties analyzed in this report

3 Stock Segmentation by Size

Figure 2 shows building stock characteristics by building size. Table 2 in Appendix B provides these data in a tabular format. Emissions include both direct and indirect greenhouse gas emissions. Direct emissions are from on-site fossil fuel combustion, and indirect emissions are from regional electricity generation. Direct emissions include both combustion and pre-combustion emissions (e.g., methane leakage for natural gas) and are based on RESNET/ANSI/ICC Standard 301 2018. Indirect emissions are calculated using state level data from the EPA for 2019 (eGRID, n.d.).

Building energy use and emissions depend on the total floor area, not the number of buildings. This is because lighting, heating, cooling, and ventilation scale with floor area.

The source of the data in this report is the public release of *ComStock End Use Savings Shape 2023 Release 1 Baseline Dataset - 2018 Weather 2023*. For reference documentation please see Parker et al. 2023.

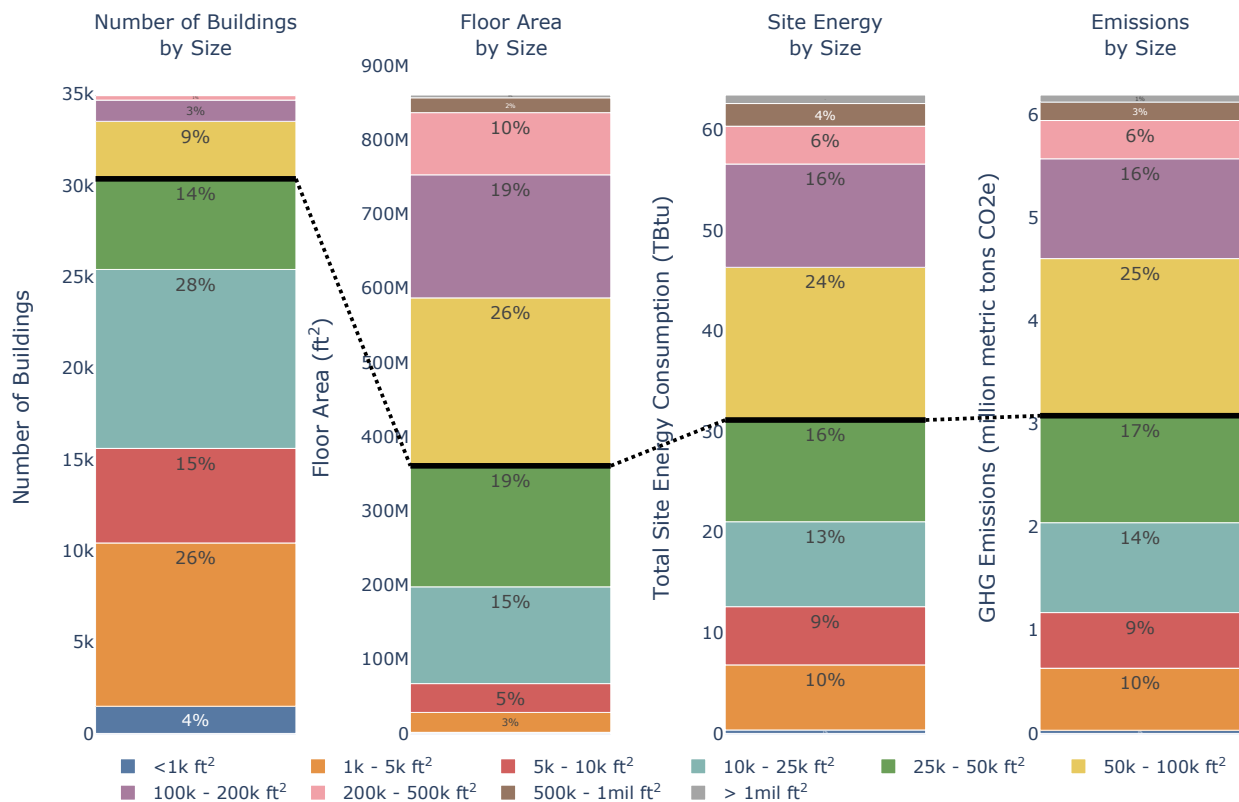


Figure 2. Building stock segmentation by building size. The black line indicates buildings above 50,000 square feet

The black line in Figure 2 traces buildings over 50,000 square feet across each column. Buildings less than 50,000 square feet make up 87% of buildings, but only 42% of area, 49% of site energy consumption, and 50% of emissions. Buildings over 50,000 square feet represent just 13% of buildings, but 51% of energy use and 50% of emissions. Thus, policies that target large buildings can address most emissions while impacting few buildings (13% vs 87%).

In this analysis only multifamily buildings over 10,000 square feet are presented. Due to limitations in the data used to develop this report, buildings over 500,000 square feet are underrepresented. If the analysis area shown in Figure 1 includes a significant number of skyscrapers, energy use in large buildings will be underrepresented.

4 Building Site Energy Use and Emissions Segmentation

The building types in this report have unique energy challenges and opportunities.

4.1 Size

Figure 3 shows energy use by building type and size. Table 3 in Appendix B provides these data in a tabular format. Among buildings over 50,000 square feet, Education buildings account for 44% of the energy used, followed by Healthcare buildings at 22% and Mercantile buildings at 18%. Other building types account for the remaining 16%. Among buildings over 25,000 square feet, Education buildings account for 39% of the energy used, followed by Mercantile buildings at 25% and Healthcare buildings at 17%. Other building types account for the remaining 19%.

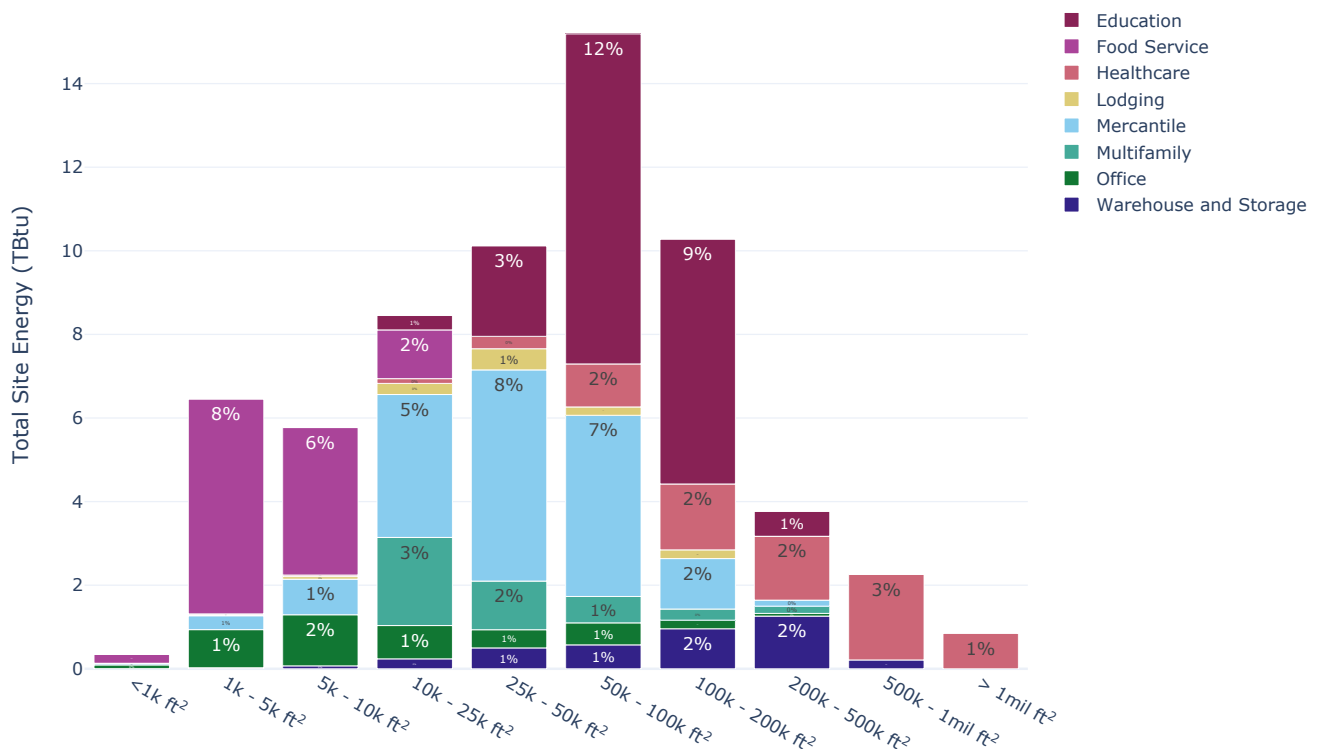


Figure 3. Site energy broken down by building type and size

Large buildings tend to have more complex heating, ventilation, and air conditioning (HVAC) systems and dedicated facility staff. They also have the resources to track and report energy use. In the context of large buildings, energy costs and efficiency matter enough for dedicated staff to focus on it. Large buildings may already have plans to improve energy efficiency.

Smaller buildings may have a part-time maintenance person at best. Energy costs and thus potential savings tend to be small, and it is often not worthwhile to hire a professional to recommend energy savings projects. Small commercial HVAC contractors serve these buildings with limited professional engineering design. Efficient equipment incentives, codes, and standards matter in these buildings.

Certain building types, like offices, span a range of building sizes. Others, like healthcare, are large, whereas restaurants are small. As shown throughout this analysis, a policy targeting larger building types can reduce a large fraction of emissions.

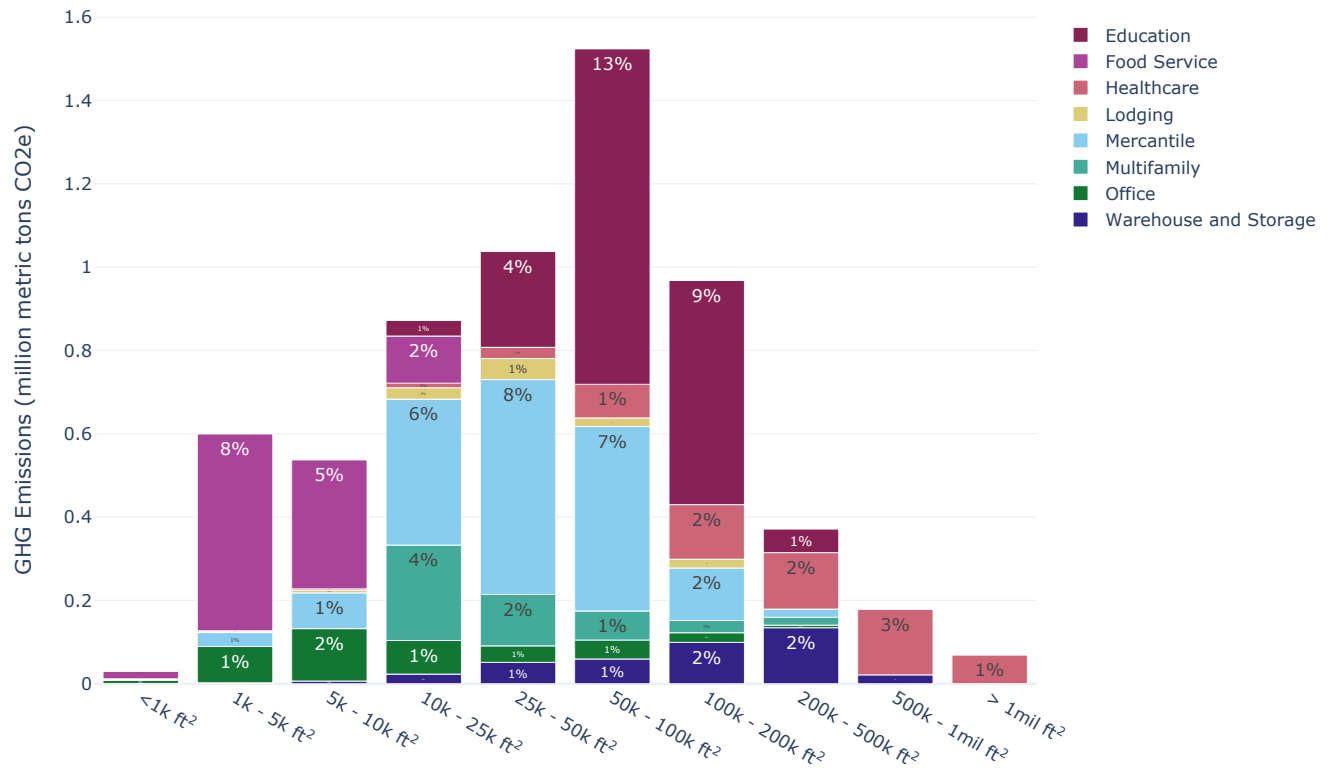


Figure 4. Greenhouse gas (GHG) emissions by building type and size

Figure 4 shows emissions by building type and size. Table 4 in Appendix B provides these data in a tabular format. Among buildings over 50,000 square feet, Education buildings account for 45% of emissions, followed by Mercantile buildings at 19% and Healthcare buildings at 18%. Other building types account for the remaining 18%. Among buildings over 25,000 square feet, Education buildings account for 39% of emissions, followed by Mercantile buildings at 27% and Healthcare buildings at 14%. Other building types account for the remaining 20%.

4.2 Energy End Uses

In this report series, “energy end use” is defined as the equipment that directly consumes energy in a building such as heating, cooling and ventilation, lighting, water heating, or refrigeration. The relative importance of each energy end use varies by building type. For example, lighting matters more in retail buildings than in warehouses. Restaurants are considered energy intensive because of their high cooking and water heating needs.

5 Building Segmentation in Disadvantaged Communities

Figures 5, 6, and 7 compare building characteristics in disadvantaged communities to those in other areas. Tables 5, 6, and 7 in Appendix B provide the associated data in a tabular format. The definition of disadvantaged communities used in this report comes from Version 1.0 of the Climate and Economic Justice Screening Tool (CEJST), which is maintained by the White House Council on Environmental Quality (CEQ) (CEQ 2023). CEJST defines disadvantaged communities as “a census tract that is: (1) at or above the threshold for one or more environmental, climate, or other burdens, and (2) at or above the threshold for an associated socioeconomic burden.” In addition, census tracts “within the boundaries of Federally Recognized Tribes are designated as disadvantaged” (CEJST: Technical Support Document 2022).

Not all disadvantaged individuals live in disadvantaged communities. The United States Office of Management and Budget (OMB) defines communities as “either a group of individuals living in geographic proximity to one another, or a geographically dispersed set of individuals (such as migrant workers or Native Americans), where either type of group experiences common conditions” (OMB M-21-28 2021). CEJST applies to geographically proximate communities. Thus, communities not labeled as disadvantaged may still contain many disadvantaged individuals.

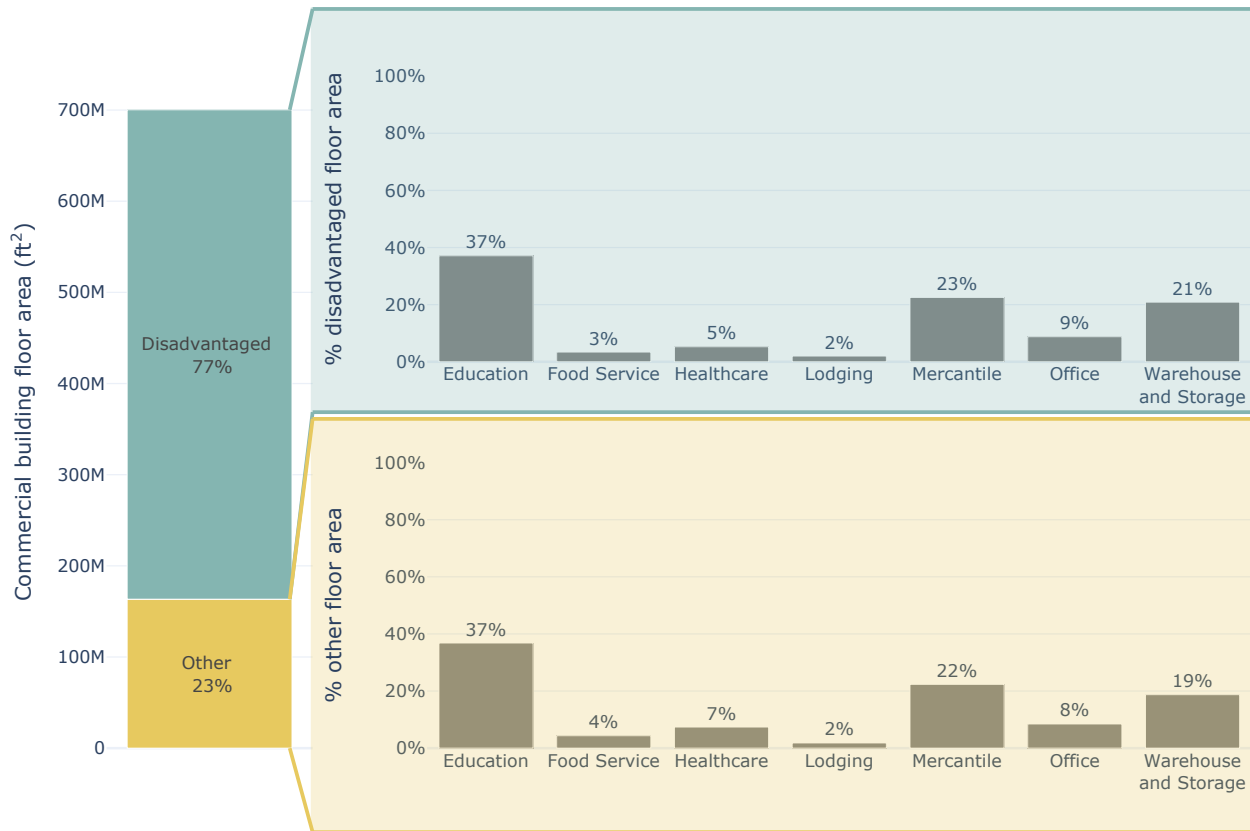


Figure 5. Segmentation of the commercial building stock by type, segmented into “disadvantaged” and “other” (as defined by CEJST)

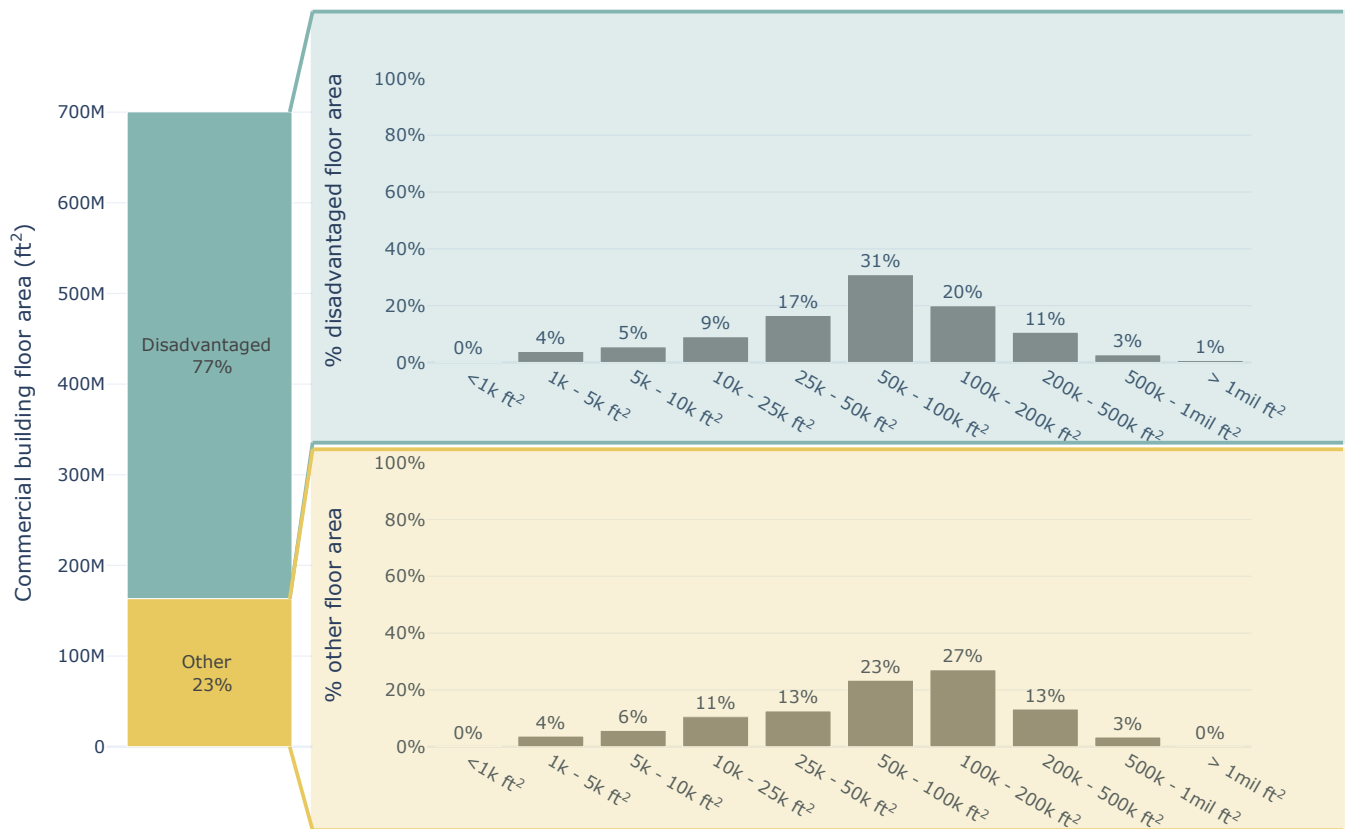


Figure 6. Segmentation of the commercial building stock by size, segmented into “disadvantaged” and “other” (as defined by CEJST)

Figure 7 segments households in multifamily buildings by building size, differentiating between “disadvantaged” and “other” communities (as defined by CEJST data on a census tract basis). This report only includes households in multifamily buildings over 10,000 square feet. Multifamily building characteristics come from a collation of county assessor databases (LightBox 2020). The figure illustrates how a policy’s building size threshold might impact multifamily buildings in disadvantaged communities. A 50,000-square-foot threshold includes 17% of multifamily buildings in disadvantaged communities. A 25,000-square-foot threshold includes 44% of multifamily buildings in disadvantaged communities.

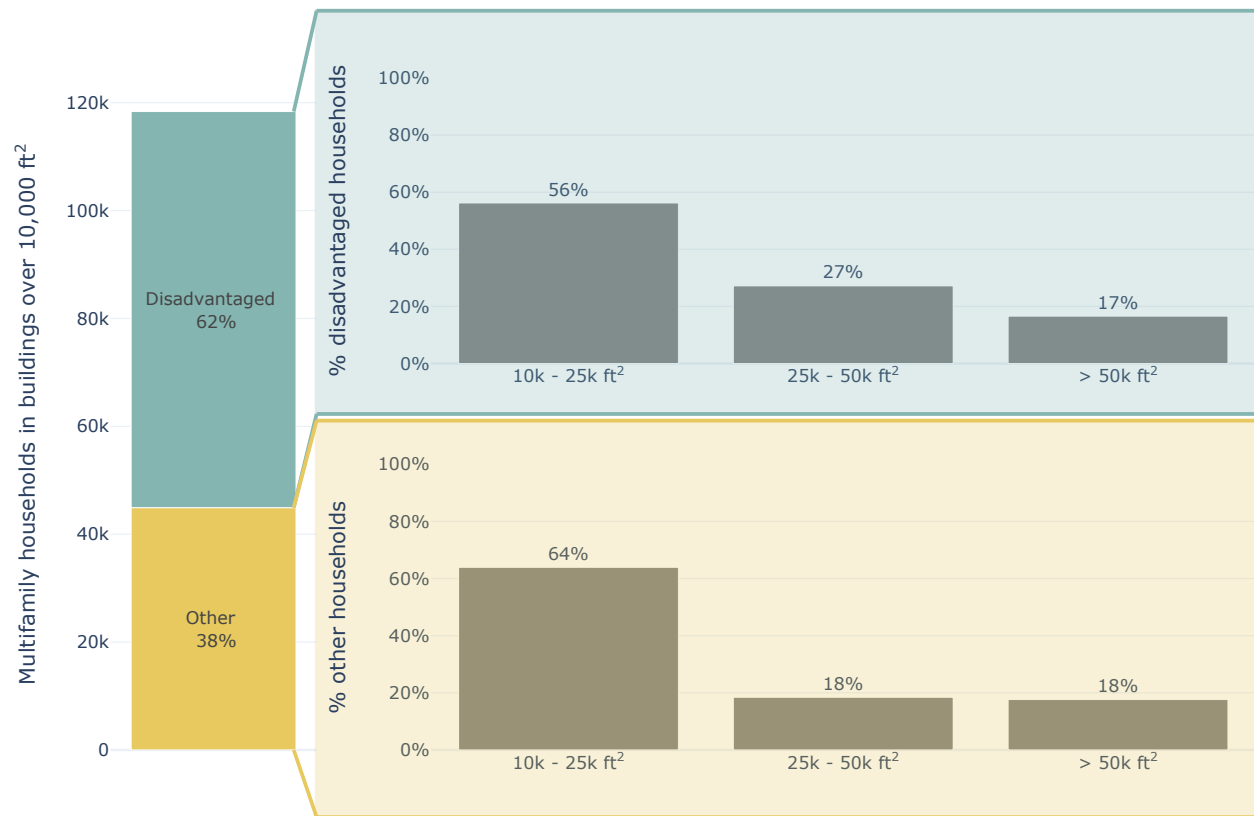


Figure 7. Households in multifamily buildings over 10,000 square feet, segmented into “disadvantaged” and “other” (as defined by CEJST)

A County and County Equivalents Included in the Analysis

The following counties (or equivalents thereof) in the listed states are included in this analysis:

Alabama Barbour County, Bullock County, Butler County, Chambers County, Cherokee County, Choctaw County, Clarke County, Clay County, Cleburne County, Coffee County, Conecuh County, Coosa County, Covington County, Crenshaw County, Cullman County, Dale County, Dallas County, DeKalb County, Escambia County, Fayette County, Franklin County, Jackson County, Lamar County, Macon County, Marengo County, Marion County, Marshall County, Monroe County, Perry County, Pike County, Randolph County, Sumter County, Talladega County, Tallapoosa County, Walker County, Wilcox County and Winston County.

Arkansas Arkansas County, Ashley County, Bradley County, Calhoun County, Chicot County, Clark County, Clay County, Cleburne County, Columbia County, Conway County, Cross County, Dallas County, Desha County, Drew County, Greene County, Hempstead County, Hot Spring County, Howard County, Independence County, Jackson County, Johnson County, Lafayette County, Lawrence County, Lee County, Logan County, Mississippi County, Monroe County, Montgomery County, Nevada County, Ouachita County, Phillips County, Pike County, Polk County, Pope County, Prairie County, Randolph County, Scott County, Sevier County, Sharp County, St. Francis County, Union County, Van Buren County, White County, Woodruff County and Yell County.

Georgia Baldwin County, Ben Hill County, Bleckley County, Bulloch County, Calhoun County, Candler County, Chattooga County, Clay County, Coffee County, Crisp County, Dodge County, Dooly County, Early County, Elbert County, Emanuel County, Glascock County, Greene County, Hancock County, Hart County, Irwin County, Jefferson County, Jenkins County, Johnson County, Laurens County, Macon County, Montgomery County, Polk County, Pulaski County, Putnam County, Quitman County, Randolph County, Schley County, Screven County, Sumter County, Taliaferro County, Taylor County, Telfair County, Tift County, Treutlen County, Troup County, Turner County, Upson County, Warren County, Washington County, Webster County, Wheeler County, Wilcox County, Wilkes County and Wilkinson County.

Louisiana Bienville Parish, Caldwell Parish, Catahoula Parish, Claiborne Parish, Concordia Parish, East Carroll Parish, Franklin Parish, Jackson Parish, La Salle Parish, Lincoln Parish, Madison Parish, Morehouse Parish, Natchitoches Parish, Ouachita Parish, Red River Parish, Richland Parish, Sabine Parish, Tensas Parish, Union Parish, Vernon Parish, Washington Parish, Webster Parish, West Carroll Parish and Winn Parish.

Mississippi Adams County, Alcorn County, Amite County, Attala County, Benton County, Bolivar County, Calhoun County, Carroll County, Chickasaw County, Choctaw County, Claiborne County, Clarke County, Clay County, Coahoma County, Franklin County, George County, Greene County, Grenada County, Humphreys County, Issaquena County, Itawamba County, Jasper County, Jefferson County, Jefferson Davis County, Jones County, Kemper County, Lafayette County, Lauderdale County, Lawrence County, Leake County, Lee County, Leflore County, Lincoln County, Lowndes County, Marion County, Monroe County, Montgomery County, Neshoba County, Newton County, Noxubee County, Oktibbeha County, Panola County, Pearl River County, Pike County, Pontotoc County, Prentiss County, Quitman County, Scott County, Sharkey County, Smith County, Sunflower County, Tallahatchie County, Tippah County, Tishomingo County, Union County, Walthall County, Warren County, Washington County, Wayne County, Webster County, Wilkinson County, Winston County and Yalobusha County.

Oklahoma Adair County, Atoka County, Bryan County, Carter County, Cherokee County, Choctaw County, Coal County, Craig County, Delaware County, Garvin County, Haskell County, Hughes County, Jefferson County, Johnston County, Latimer County, Le Flore County, Love County, Marshall County, Mayes County, McCurtain County, McIntosh County, Murray County, Muskogee County, Nowata County, Okfuskee County, Ottawa County, Pittsburg County, Pontotoc County, Pottawatomie County, Pushmataha County, Seminole County, Stephens County and Washington County.

South Carolina Abbeville County, Allendale County, Bamberg County, Barnwell County, Cherokee County, Colleton County, Greenwood County, Hampton County, McCormick County, Newberry County, Oconee County, Orangeburg County and Union County.

Tennessee Dyer County, Hardeman County, Hardin County, Haywood County, Henderson County, Lake County, Lauderdale County and McNairy County.

Texas Blanco County, Brown County, Burnet County, Camp County, Cass County, Comanche County, Cooke County, Delta County, Eastland County, Erath County, Fannin County, Franklin County, Gillespie County, Hamilton County, Henderson County, Hood County, Hopkins County, Jack County, Lamar County, Llano County, Marion County, Mills County, Montague County, Morris County, Nacogdoches County, Navarro County, Palo Pinto County, Panola County, Rains County, Red River County, Sabine County, San Augustine County, San Saba County, Shelby County, Somervell County, Stephens County, Titus County, Van Zandt County, Wood County and Young County.

B Tables of Figure Values

The following tables summarize the figures shown throughout the report.

0.1 Building Stock Segmentation by Building Size

Table 2. Segmentation of the Building Stock by Building Size (floor area is in square feet, site energy is in TBtu, and emissions are in million metric tons CO₂e)

Building Size	Number of Buildings by Size	Floor Area by Size	Site Energy by Size	Emissions by Size
<1k ft ²	1,490	1,490,000	0.345	0.0308
1k – 5k ft ²	8,940	26,800,000	6.47	0.602
5k – 10k ft ²	5,180	38,900,000	5.79	0.54
10k – 25k ft ²	9,800	130,000,000	8.45	0.872
25k – 50k ft ²	4,960	163,000,000	10.1	1.04
50k – 100k ft ²	3,150	226,000,000	15.2	1.52
100k – 200k ft ²	1,160	166,000,000	10.3	0.968
200k – 500k ft ²	248	83,800,000	3.76	0.371
500k – 1Mil ft ²	27	20,000,000	2.26	0.178
> 1Mil ft ²	4	3,710,000	0.845	0.0686

0.2 Site Energy by Building Type and Size

Table 3. Building Stock Site Energy by Building Type and Size (all values are in TBtu)

Building Size	Education	Food Service	Healthcare	Lodging	Mercantile	Multifamily	Office	Warehouse and Storage
<1k ft ²	0.00161	0.211	0.00201	0.00446	0.0328	0	0.0893	0.00346
1k – 5k ft ²	0.0189	5.14	0.0262	0.0185	0.332	0	0.911	0.0252
5k – 10k ft ²	0.0204	3.53	0.0362	0.0625	0.851	0	1.22	0.0703
10k – 25k ft ²	0.345	1.17	0.114	0.266	3.42	2.11	0.797	0.238
25k – 50k ft ²	2.16	0	0.296	0.507	5.05	1.16	0.435	0.499
50k – 100k ft ²	7.9	0	1.03	0.2	4.33	0.631	0.526	0.572
100k – 200k ft ²	5.85	0	1.58	0.209	1.21	0.267	0.205	0.958
200k – 500k ft ²	0.594	0	1.53	0	0.144	0.173	0.0645	1.26
500k – 1Mil ft ²	0	0	2.04	0	0	0	0	0.211
> 1Mil ft ²	0	0	0.845	0	0	0	0	0

0.3 Emissions by Building Type and Size

Table 4. Building Stock Emissions by Building Type and Size (all values are in million metric tons CO₂e)

Building Size	Education	Food Service	Healthcare	Lodging	Mercantile	Multifamily	Office	Warehouse and Storage
<1k ft ²	0.00017	0.0188	0.000248	0.000308	0.00325	0	0.00773	0.000289
1k – 5k ft ²	0.00175	0.473	0.00265	0.00174	0.0335	0	0.087	0.00233
5k – 10k ft ²	0.00192	0.31	0.00369	0.00586	0.0859	0	0.126	0.00639
10k – 25k ft ²	0.0374	0.113	0.0108	0.0276	0.35	0.229	0.0808	0.023
25k – 50k ft ²	0.23	0	0.0268	0.0506	0.516	0.123	0.0396	0.0513
50k – 100k ft ²	0.805	0	0.0806	0.0208	0.443	0.0699	0.0454	0.0594
100k – 200k ft ²	0.538	0	0.131	0.0212	0.126	0.0293	0.0232	0.0992
200k – 500k ft ²	0.0566	0	0.136	0	0.0196	0.0189	0.00613	0.134
500k – 1Mil ft ²	0	0	0.157	0	0	0	0	0.0213
> 1Mil ft ²	0	0	0.0686	0	0	0	0	0

0.4 Segmentation of the Commercial Building Stock by Type and CEJST Disadvantaged Definition

Table 5. Commercial Building Stock Floor Area Segmented by CEJST Disadvantaged Definition and Type (all values are in square feet)

Building Type	Disadvantaged	Other
Education	199,000,000	60,200,000
Food Service	18,300,000	7,130,000
Healthcare	28,300,000	12,100,000
Lodging	10,800,000	2,990,000
Mercantile	121,000,000	36,500,000
Office	47,100,000	13,900,000
Warehouse and Storage	112,000,000	30,600,000

0.5 Segmentation of the Commercial Building Stock by Size and CEJST Disadvantaged Definition

Table 6. Commercial Building Stock Floor Area Segmented by CEJST Disadvantaged Definition and Size (all values are in square feet)

Building Size	Disadvantaged	Other
<1k ft ²	1,160,000	325,000
1k – 5k ft ²	20,700,000	6,110,000
5k – 10k ft ²	29,500,000	9,370,000
10k – 25k ft ²	48,600,000	17,300,000
25k – 50k ft ²	88,800,000	20,600,000
50k – 100k ft ²	166,000,000	38,200,000
100k – 200k ft ²	107,000,000	44,300,000
200k – 500k ft ²	57,000,000	21,700,000
500k – 1Mil ft ²	14,400,000	5,570,000
> 1Mil ft ²	3,710,000	0

0.6 Segmentation of Households in the Multifamily Building Stock Over 10,000 Square Feet

Table 7. Multifamily Households Segmented by CEJST Disadvantaged Definition and Size (all values are in number of households)

Building Size	Disadvantaged	Other
10k – 25k ft ²	41,300	28,700
25k – 50k ft ²	20,000	8,280
> 50k ft ²	12,200	7,930

References:

- RESNET/ANSI/ICC Standard 301. *Standard for the Calculation and Labeling of the Energy Performance of Dwelling and Sleeping Units using an Energy Rating Index*. 2018.
- CBECS. *Commercial Buildings Energy Consumption Survey 2012*. 2014. Technical report. U.S. Energy Information Administration 1000 Independence Ave., SW Washington, DC 20585: U.S. Energy Information Administration. <https://www.eia.gov/consumption/commercial/data/2012/>.
- CEQ. *Climate and Economic Justice Screening Tool*. 2023. Accessed Feb. 24, 2023 [Online]. Council on Environmental Quality, Council on Environmental Quality 730 Jackson Place NW Washington, D.C. 20506. <https://screeningtool.geoplatform.gov/en>.
- ComStock End Use Savings Shape 2023 Release 1 Baseline Dataset - 2018 Weather*. 2023. National Renewable Energy Laboratory. https://data.openei.org/s3_viewer?bucket=oedi-data-lake&prefix=nrel-pds-building-stock%2Fend-use-load-profiles-for-us-building-stock%2F2023%2Fcomstock_amy2018_release_1%2F.
- CEJST: Technical Support Document. *Climate and Economic Justice Screening Tool: Technical Support Document - Version 1.0*. 2022. Council on Environmental Quality 730 Jackson Place NW Washington, D.C. 20506: Council on Environmental Quality, November. <https://static-data-screeningtool.geoplatform.gov/data-versions/1.0/data/score/downloadable/1.0-cejst-technical-support-document.pdf>.
- eGRID. “Emissions and Generation Resource Integrated Database: 2019.” n.d. U.S. Environmental Protection Agency. Accessed March 8, 2023. https://www.epa.gov/sites/default/files/2021-02/egrid2019_data.xlsx.
- EIA. 2022. *Table C5: Consumption and gross energy intensity by census region for sum of major fuels*. Technical report. U.S. Energy Information Administration 1000 Independence Ave., SW Washington, DC 20585: U.S. Energy Information Administration. <https://www.eia.gov/consumption/commercial/data/2018/index.php?view=consumption>.
- Horse, Henry R., Rozenfeld, Hernan, and Bergmann, Harry. 2023. *Stock Segmentation Cluster Development: Technical Reference Document*. NREL/NREL/TP-5500-84648. Golden, CO: National Renewable Energy Laboratory. <https://www.nrel.gov/docs/fy23osti/84648.pdf>.
- LightBox. 2020. *LightBox Property*. Technical report. LightBox LLC. <https://www.lightboxre.com/data/property/>.
- OMB M-21-28. *Interim Implementation Guidance for the Justice40 Initiative*. 2021. OMB M-21-28. United States Office of Management and Budget, 725 Seventeenth Street NW., Washington, DC 20503. <https://www.whitehouse.gov/wp-content/uploads/2021/07/M-21-28.pdf>.
- Parker, Andrew, Horse, Henry, Dahlhausen, Matthew, Praprost, Marlena, CaraDonna, Christopher, LeBar, Amy, and Klun, Lauren. 2023. *ComStock Reference Documentation: Version 1*. NREL/NREL/TP-5500-83819. Golden, CO: National Renewable Energy Laboratory. <https://www.nrel.gov/docs/fy23osti/83819.pdf>.
- RECS. *Residential Buildings Energy Consumption Survey 2020*. 2022. Technical report. U.S. Energy Information Administration 1000 Independence Ave., SW Washington, DC 20585: U.S. Energy Information Administration. <https://www.eia.gov/consumption/residential/data/2020/>.

U.S. DEPARTMENT OF
ENERGY

Office of
**ENERGY EFFICIENCY &
RENEWABLE ENERGY**

For more information, visit:
energy.gov/eere/buildings

DOE/GO-102023-6020 • August 2023