

U.S. Department of Energy

# HelioCon

Heliostat Consortium for  
Concentrating Solar-Thermal Power



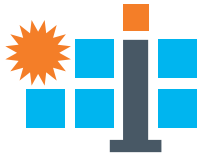
## Characterizing Heliostats at a Commercial Scale With Non-Intrusive Optics

Tucker Farrell,  
presented by Devon Kesseli

ASME ES 2023

July 10<sup>th</sup>-12<sup>th</sup>, 2023

conceptual design • components • integration • mass production • heliostat field



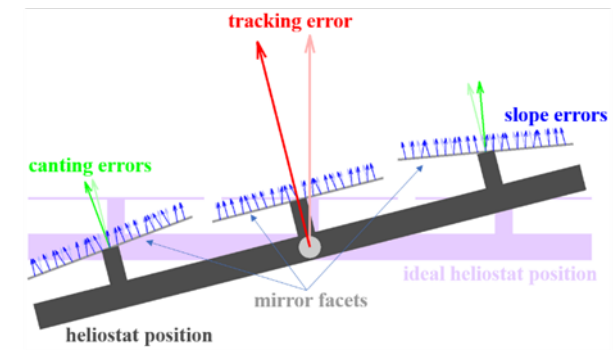
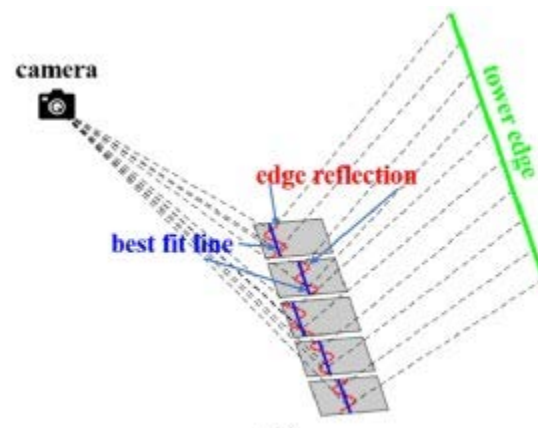
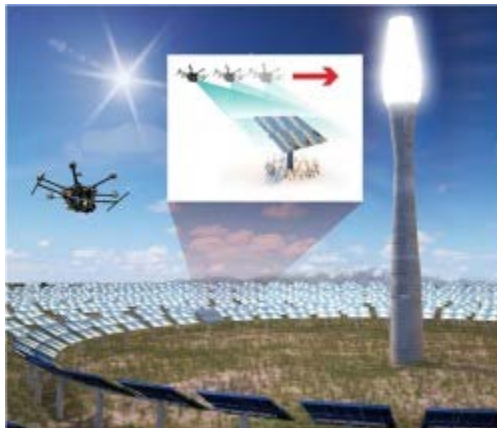
# NIO Methodology

## Objective

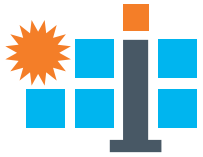
- *Precisely measure 3 sources of heliostat optical error quickly and automatically, without interfering with plant operations*

## Solution

- *A UAS-based imaging platform to detect reflections of the central tower in the heliostat surface combined with a software tool to characterize reflector slope-error from the reflection data.*
- *From the slope-error data, derive canting and tracking errors*



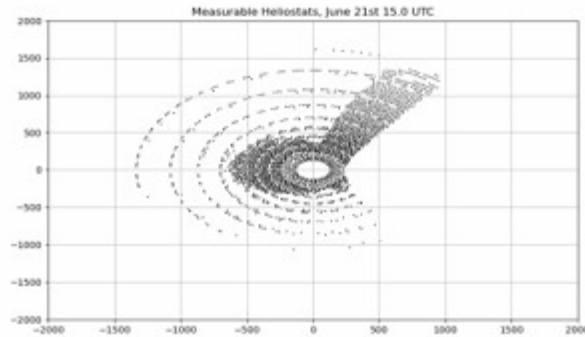




# NIO Process *Point-wise deviations of the mirror surface normal vector*

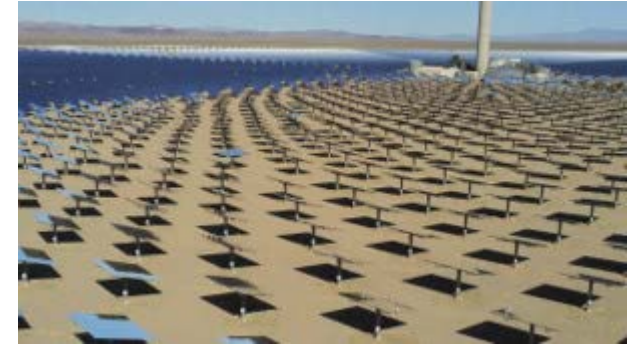
## 1: Field model

- Define heliostats and tower in space
- Assess measurability



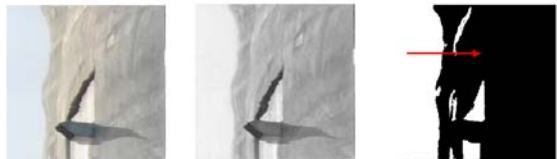
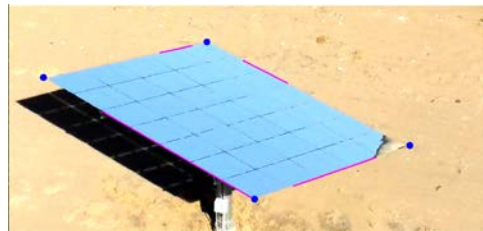
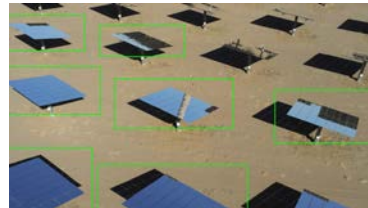
## 2: Data collection

- Generate waypoints for sector of heliostats
- Collect video data



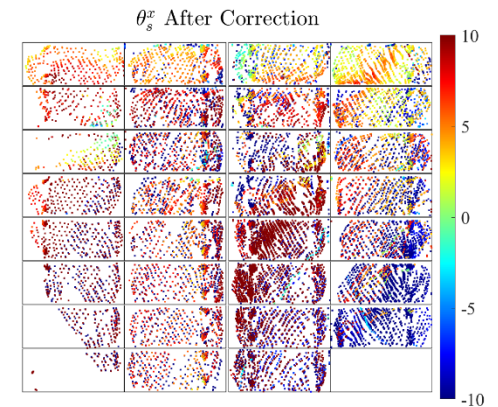
## 3: Data parsing

- Define expected orientations
- Find heliostats
- Find features



## 4: Optical errors

- 1D – calculate slope, canting, and tracking normal to reflected tower edge
- Apply tracking correction to refine
- 2D – solve for vector that satisfies reflection conditions for two orientations at single point



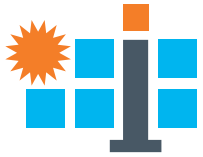
conceptual design

• components

• integration

• mass production

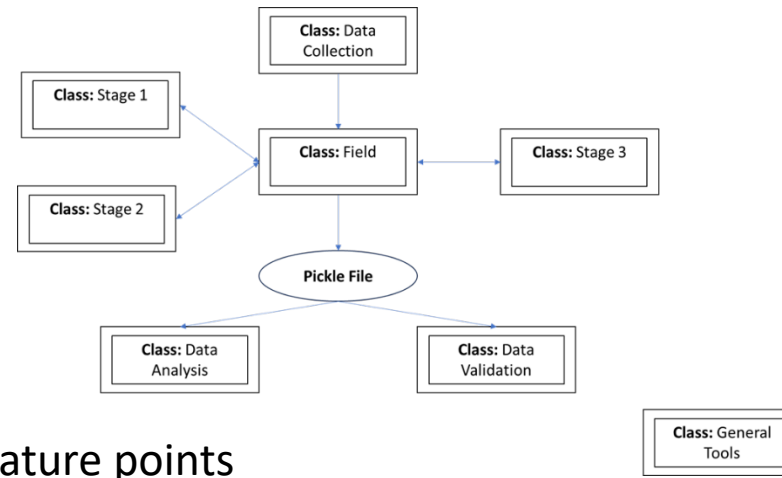
• heliostat field



# NIO Developments

## Field model and measurability

- Generalized NIO framework and architecture
- Sector-based measurability



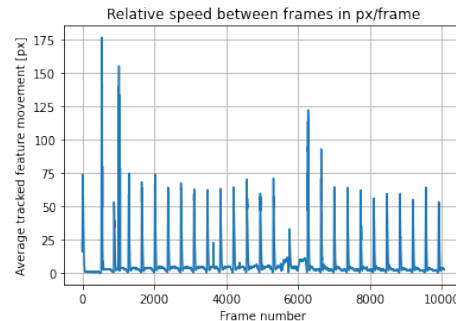
## Data processing

- Optical flow for heliostat frame identification
- Features move faster between heliostats

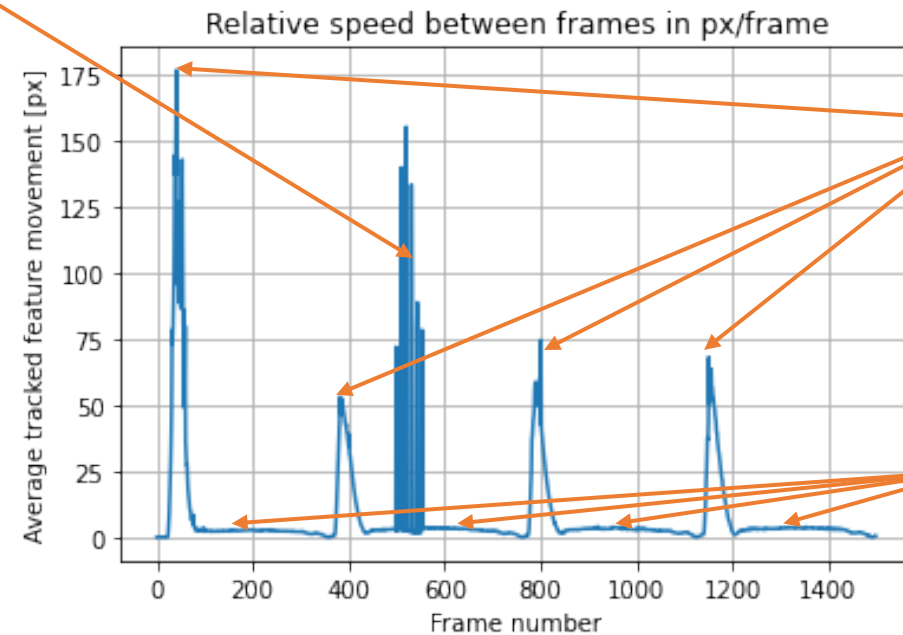
## Optical error

- Codebase transcription and validation
- Compiled test cases and scripts to verify consistent performance

Feature points  
locked onto tower

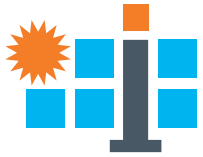


Shown is video 1 of 2 from 50-heliostat flight with 25 scans per video



Transits  
between  
heliostats

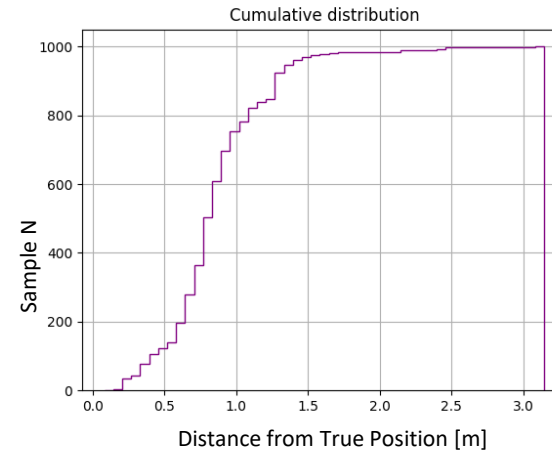
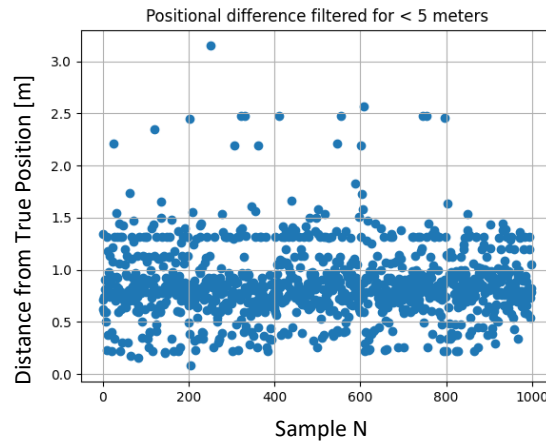
Measurement  
scans



# NIO Results

## Camera position estimation

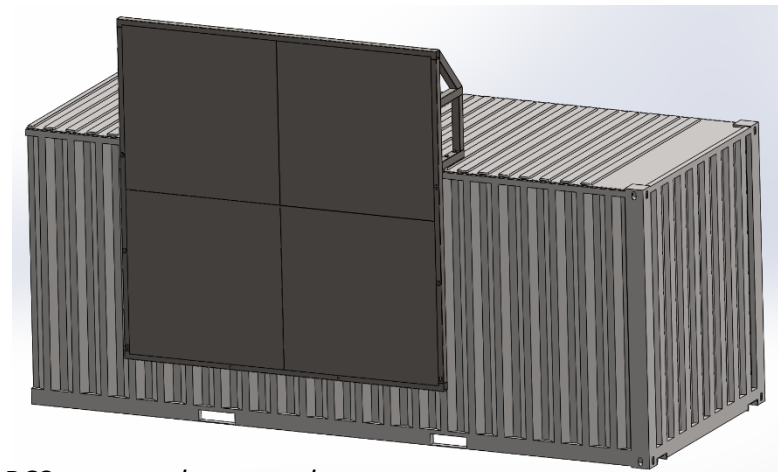
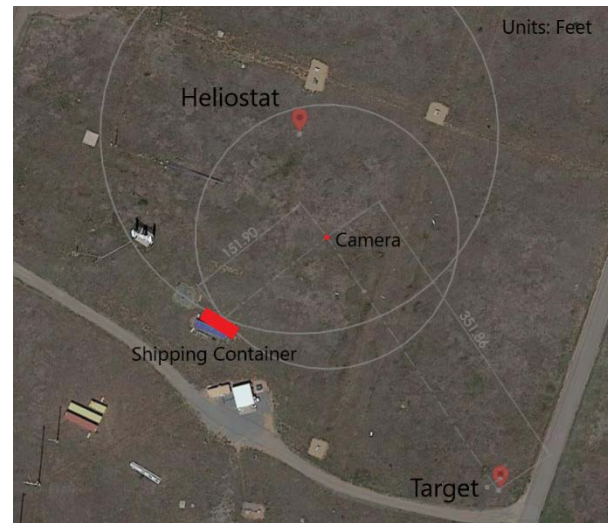
- Camera position can vary for a fixed bounding box
- This is dependent on camera resolution
- Measured against “True Position” where the true corners are user-defined



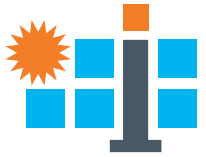
Positions derived for a single image and given bounding box for N=1000, compared against “True” position

## Validation planning

- Validation planned with new NREL BCS under development at Flatirons



Proposed site and rendering of BCS target to be erected



# NIO: Goals

*An in-situ heliostat measurement tool to assess slope, canting, and tracking errors on operational heliostats in commercial fields.*

## *Performance goals*

### *1. Fast*

- \* 🏗️ Avg time per heliostat: 2 minutes

### *2. Accurate*

- \* 🏗️ Assess 2D slope errors: 0.25 milliradians
- \* 🏗️ Feature detection accurate to 95%

### *3. Generalizable*

- \* 🏗️ Usable for any field configuration, with any heliostat, and any tower construction

### *4. Easy to use*

- \* 🏗️ Usable by existing plant support personnel
- \* 🏗️ Automated collection and processing
- \* 🏗️ Approachable interface

## *Application goals*

### *1. Commissioning*

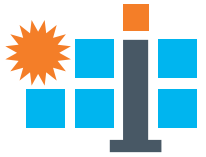
Ensuring heliostats maintain design performance at installation

### *2. Optimization strategies*

Accurate pointing strategies require accurate input data

### *3. Solar field performance monitoring*

Beam quality assessment can isolate losses specific to the heliostat performance



# NIO Benchmarks and Status

Goal	Metric	Current status	Plan forward
Collection speed	5 sec/heliostat	5 sec/heliostat	Smooth path planner, replace pivoting, focused dynamics with fixed camera heading scan to improve object tracking.
Processing speed	1 sec/frame	1.8 sec/frame tracking, 4 sec/detection	Replace detection with more rapid detection algorithm (YOLO, faster RCNN) to increase detection times. Optimize corner finding to speed up general frame. 1 sec/frame yields ~2.5 minutes/heliostat.
Accuracy	0.25 mrad	Under validation	Test code against BCS results from commercial plants and validate at Flatirons test facility at end of FY23, early FY24.
Accuracy	Feature detection accurate on 95% of input data	80% accurate on average	Testing iterative and stochastic estimation techniques for filtering detected features more accurately.
Generalizable	Train and test on 3 heliostat variants.	Used on 1, with data on 2 additional.	Training improvements for speed will include additional heliostat models for detection. Validate performance on additional heliostat shapes.
Ease of use	Functional GUI	65%	Finish tying in as performance is validated



# Questions or Comments?

# Thank You!

---

[www.nrel.gov](http://www.nrel.gov)

NREL/PR-5700-87046

This work was authored by the National Renewable Energy Laboratory, operated by Alliance for Sustainable Energy, LLC, for the U.S. Department of Energy (DOE) under Contract No. DE-AC36-08GO28308. Funding provided by U.S. Department of Energy Office of Energy Efficiency and Renewable Energy Solar Energy Technologies Office. The views expressed in the article do not necessarily represent the views of the DOE or the U.S. Government. The U.S. Government retains and the publisher, by accepting the article for publication, acknowledges that the U.S. Government retains a nonexclusive, paid-up, irrevocable, worldwide license to publish or reproduce the published form of this work, or allow others to do so, for U.S. Government purposes.

conceptual design • components • integration • mass pro

