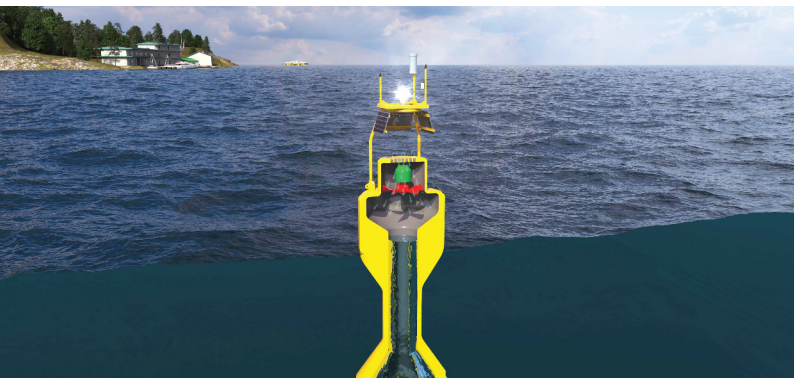




REDi

Renewable Energy Discovery Island

Arielle Cardinal, National Renewable Energy Laboratory
 Pan-American Marine Energy Conference
 Barranquilla, Colombia
 January 20, 2024



Explore the Renewable Energy Discovery (REDi) Island, a web-based educational application of a virtual world powered entirely by renewable energy.

Funded by the U.S. Department of Energy's Water Power Technologies Office and created by the National Renewable Energy Laboratory (NREL) and IKM 3D, the REDi Island mission is to:



ENGAGE in clean energy science



EDUCATE tomorrow's energy innovators



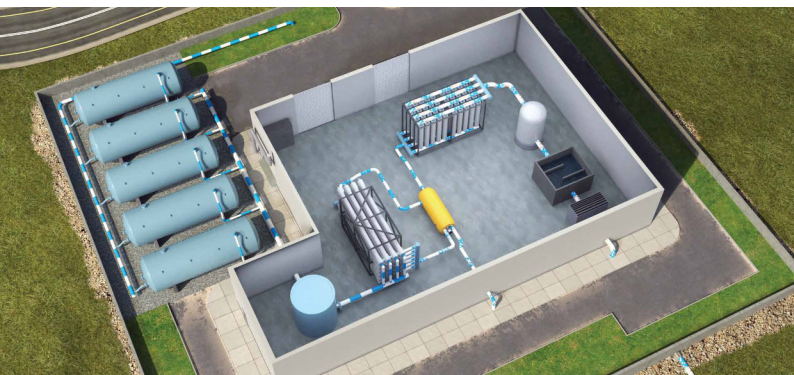
INSPIRE a renewable energy revolution.



Home to hydropower, marine energy, and other renewable energy waystations, the app offers resources for students, educators, and anyone interested in learning more about clean energy technologies and workforce opportunities.

The app includes:

- Technical details of various renewable energy technologies
- Career pathways
- Curricula and lesson plans
- Educational resources, videos, and more.



In 2024, NREL will continue to release waystations on the island. For now, users can fly over four destinations on the smaller island: Research Reef (above), Navigation Network, Tidal Town, and Desalination Station (top to bottom).

